

Asymptomatic

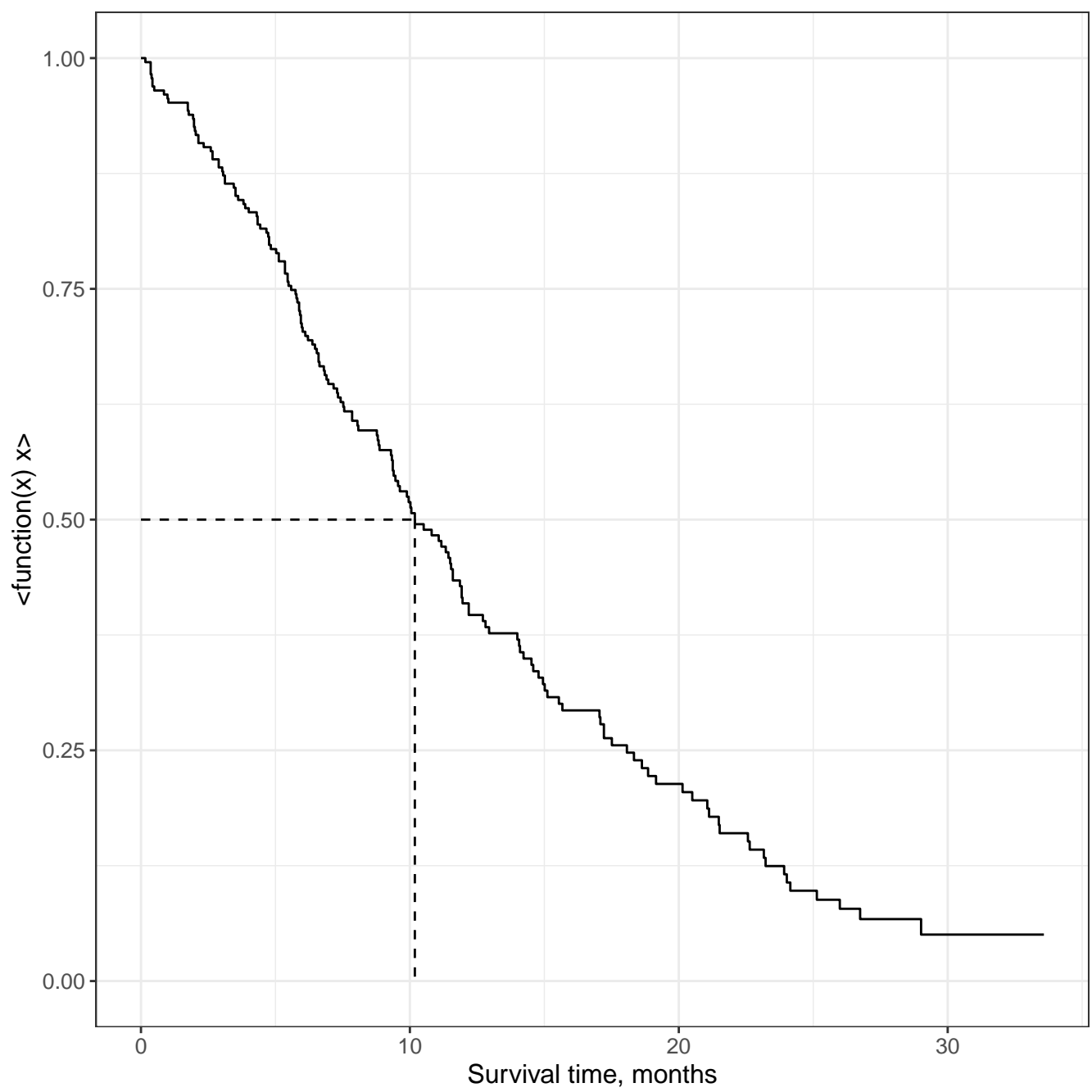
Male, In bed <50% of the day

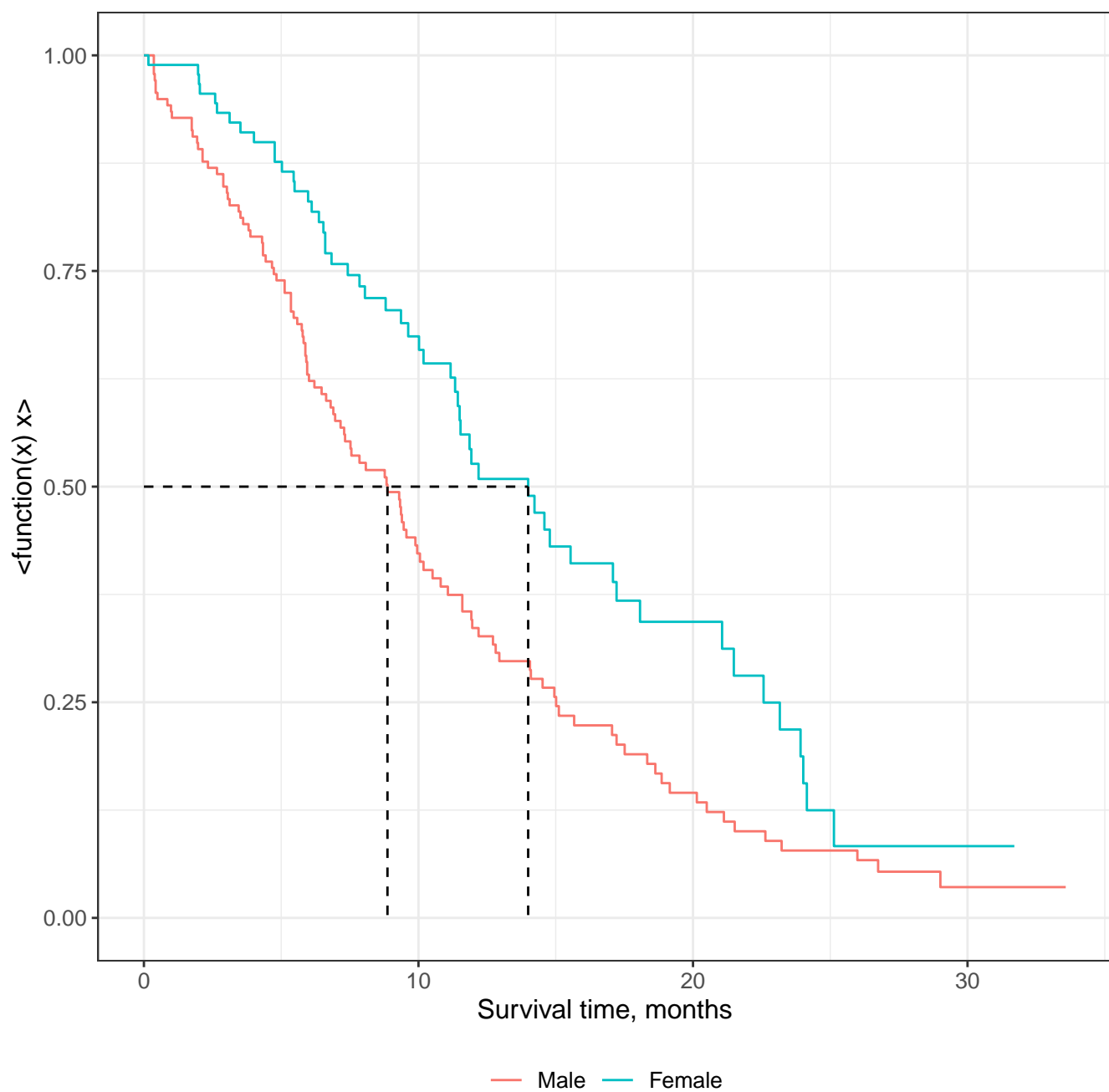
Female, Asymptomatic

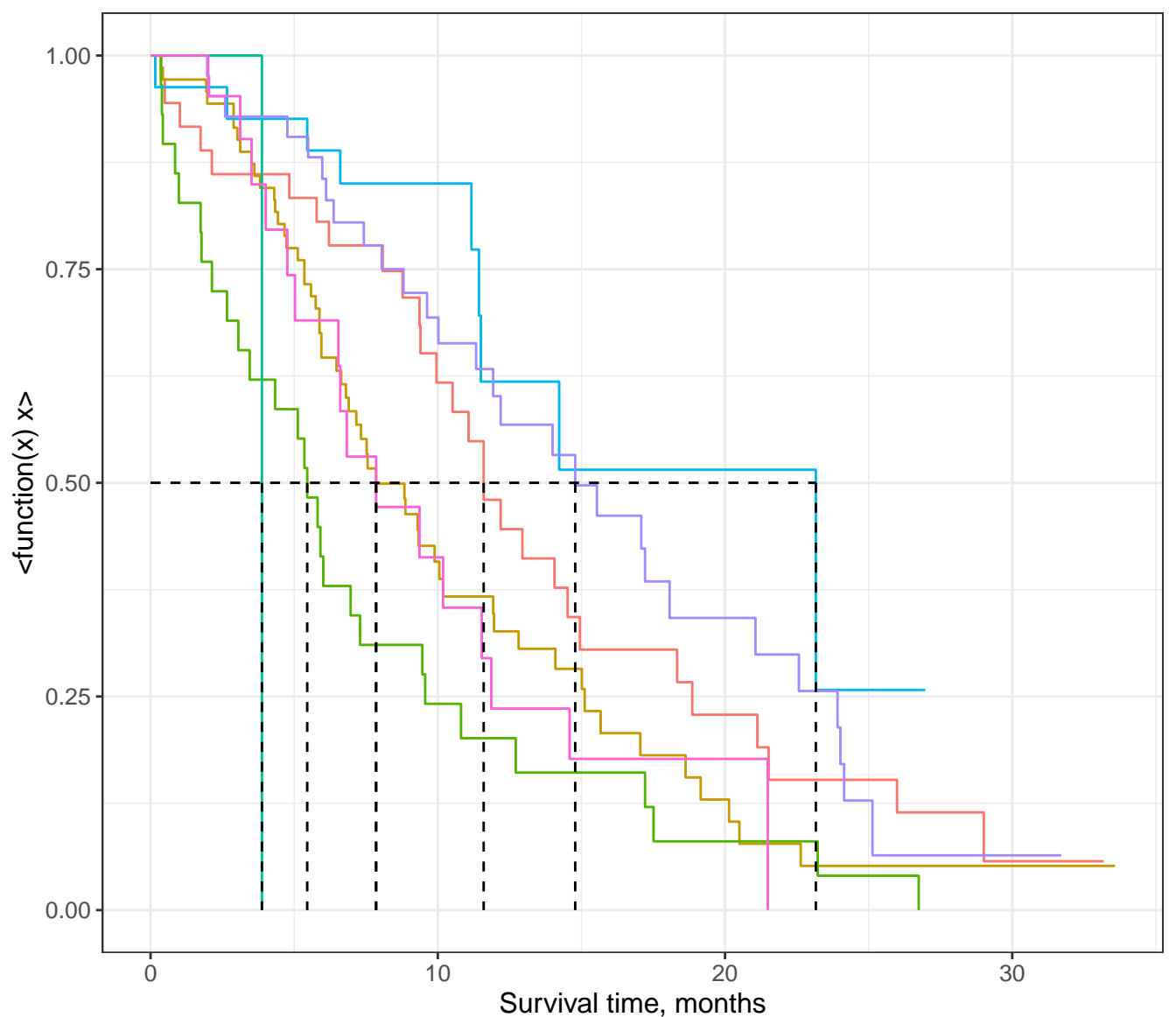
Female, Symptomatic and ambulatory

Male, In bed > 50% of the day

Female, Symptomatic





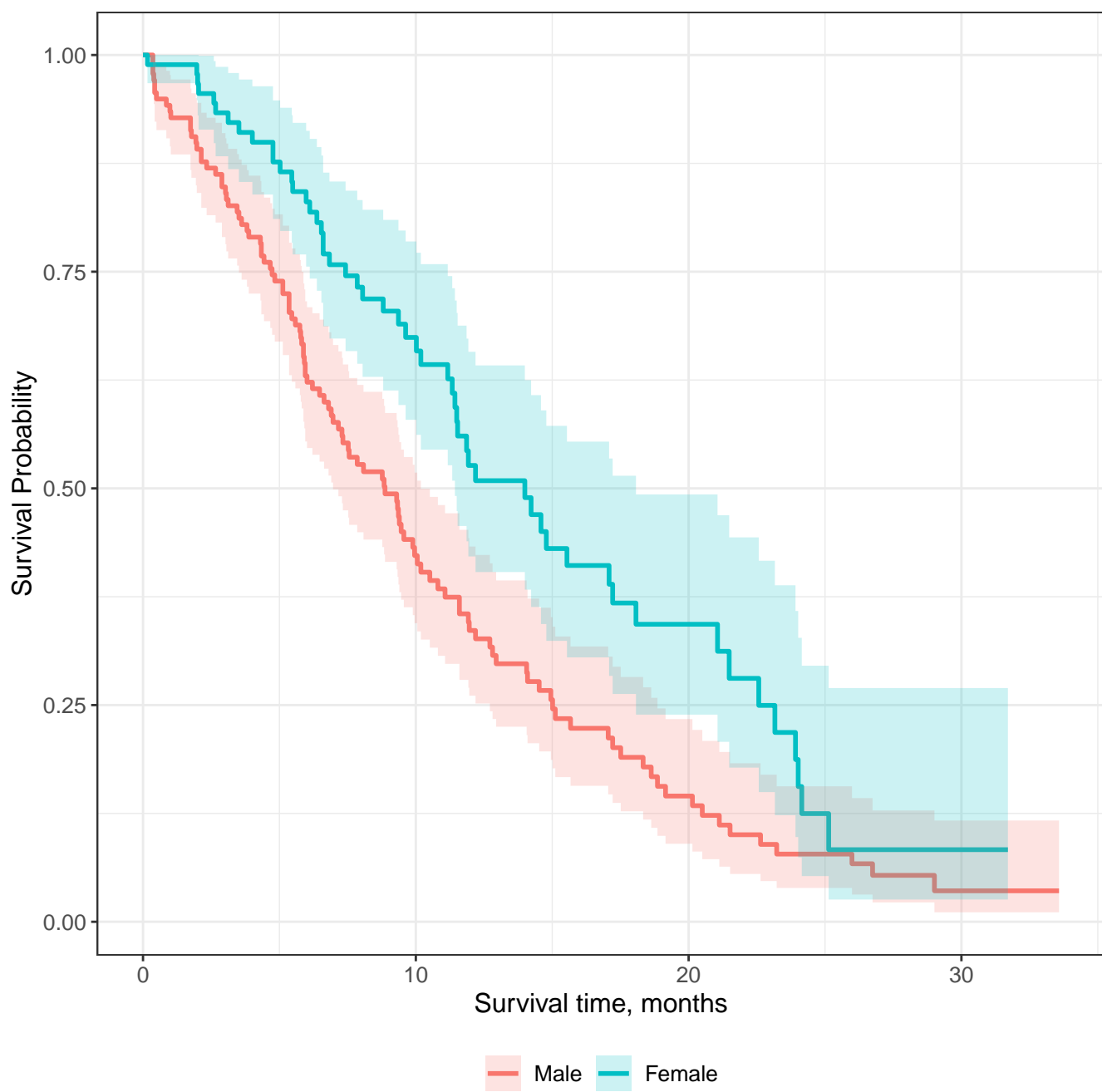


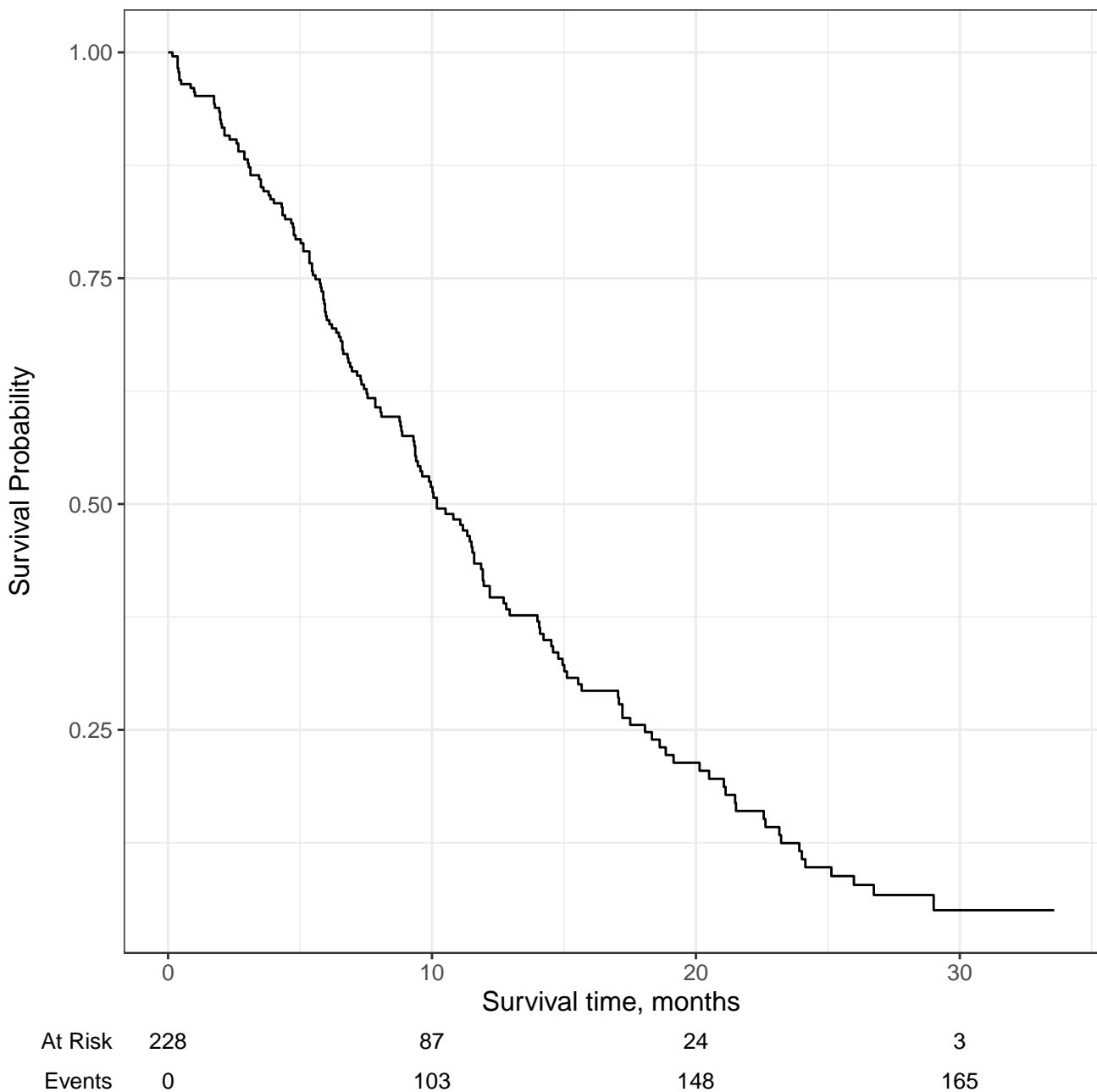
asymptomatic  
 asymptomatic and ambulatory

Male, In bed <50% of the day  
 Male, In bed > 50% of the day

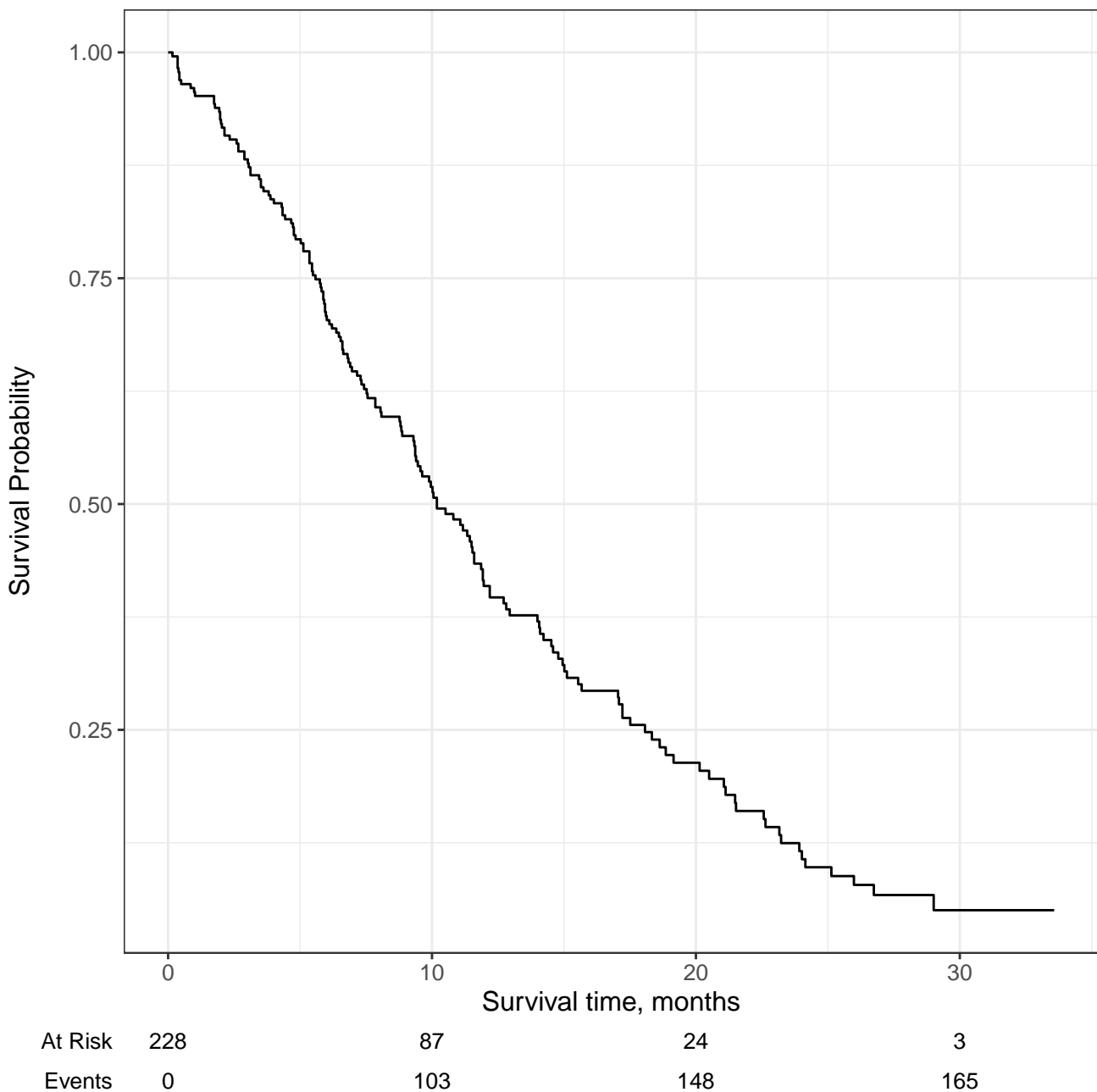
Female, Asymptomatic  
 Female, Symptomatic and ambulatory

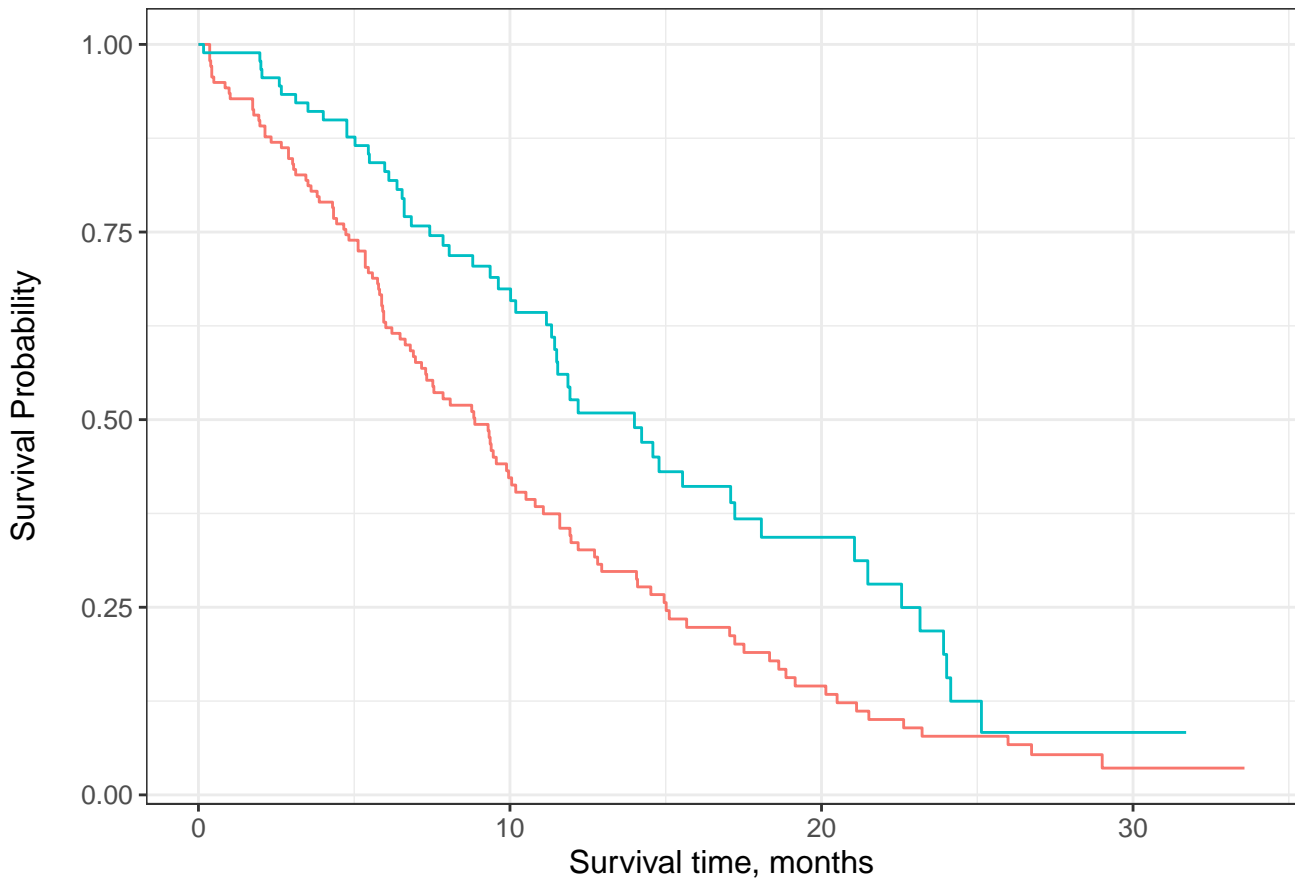
Female, Asymptomatic and ambulatory  
 Female, Symptomatic











Male Female

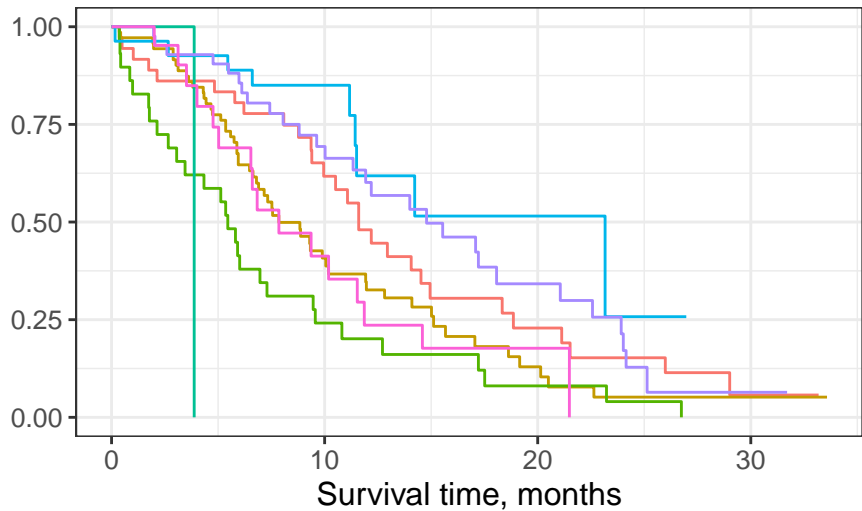
Male

At Risk	138	44	13	2
Events	0	76	103	112

Female

At Risk	90	43	11	1
Events	0	27	45	53

Survival Probability



Male, Asymptomatic

Male, In bed <50% of the day

Female, Asymptomatic

Male, Symptomatic and ambulatory

Male, In bed > 50% of the day

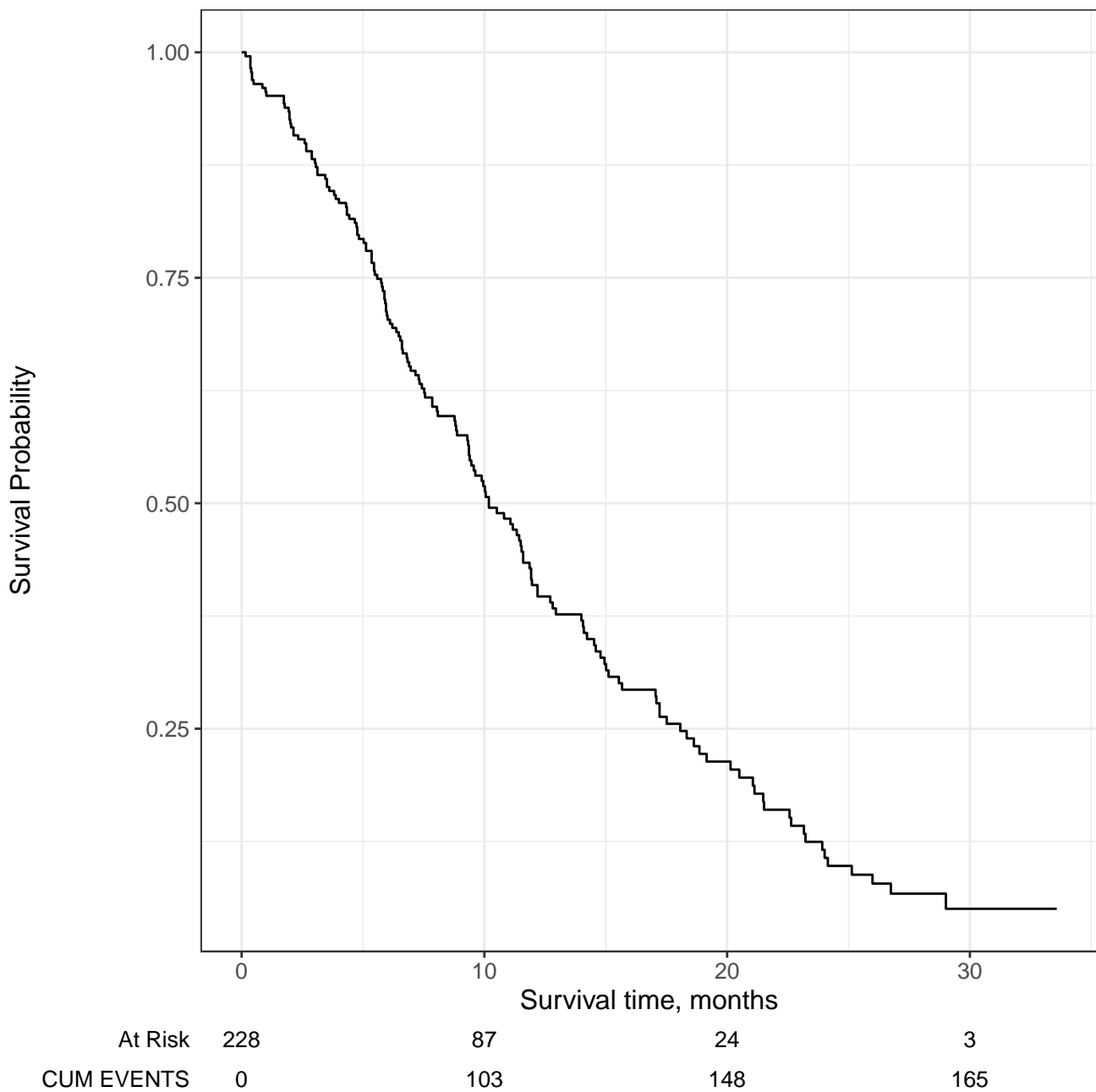
Female, Symptomatic and ambulatory

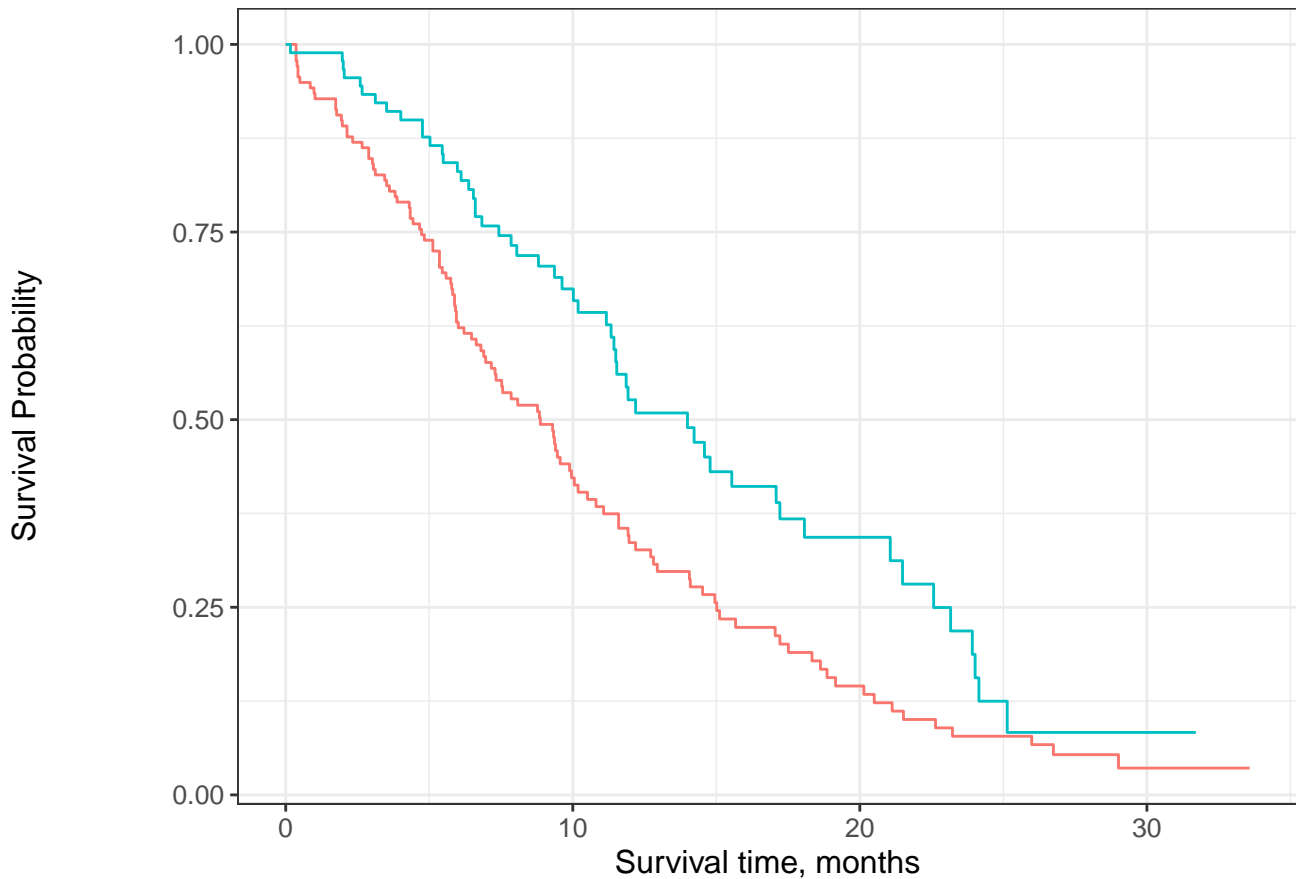
At Risk

Male, Asymptomatic	36	18	6	1
Male, Symptomatic and ambulatory	71	20	5	1
Male, In bed <50% of the day	29	6	2	0
Male, In bed > 50% of the day	1	0	0	0
Female, Asymptomatic	27	13	2	0
Female, Symptomatic and ambulatory	42	23	8	1
Female, In bed <50% of the day	21	7	1	0

Events

Male, Asymptomatic	0	13	24	28
Male, Symptomatic and ambulatory	0	39	51	54
Male, In bed <50% of the day	0	22	26	28
Male, In bed > 50% of the day	0	1	1	1
Female, Asymptomatic	0	4	8	9
Female, Symptomatic and ambulatory	0	12	22	28
Female, In bed <50% of the day	0	11	15	16





Male Female

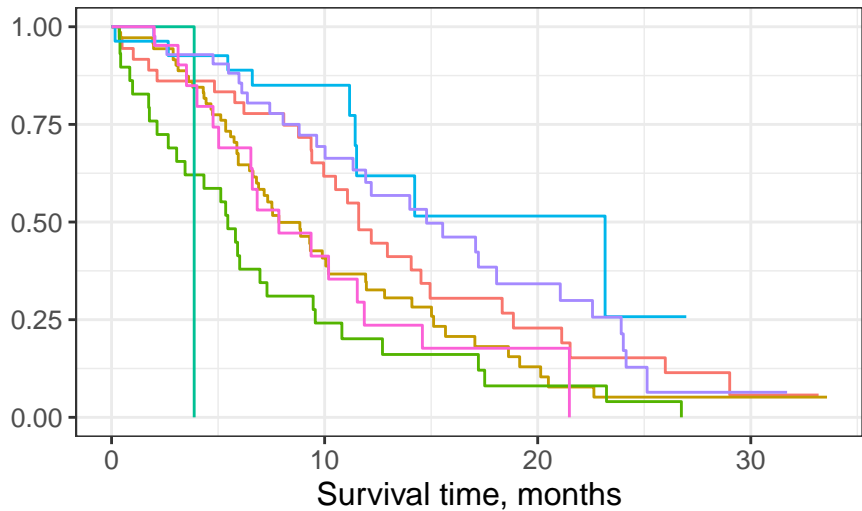
Male

At Risk	138	44	13	2
CUM EVENTS	0	76	103	112

Female

At Risk	90	43	11	1
CUM EVENTS	0	27	45	53

Survival Probability



Male, Asymptomatic

Male, In bed <50% of the day

Female, Asymptomatic

Male, Symptomatic and ambulatory

Male, In bed > 50% of the day

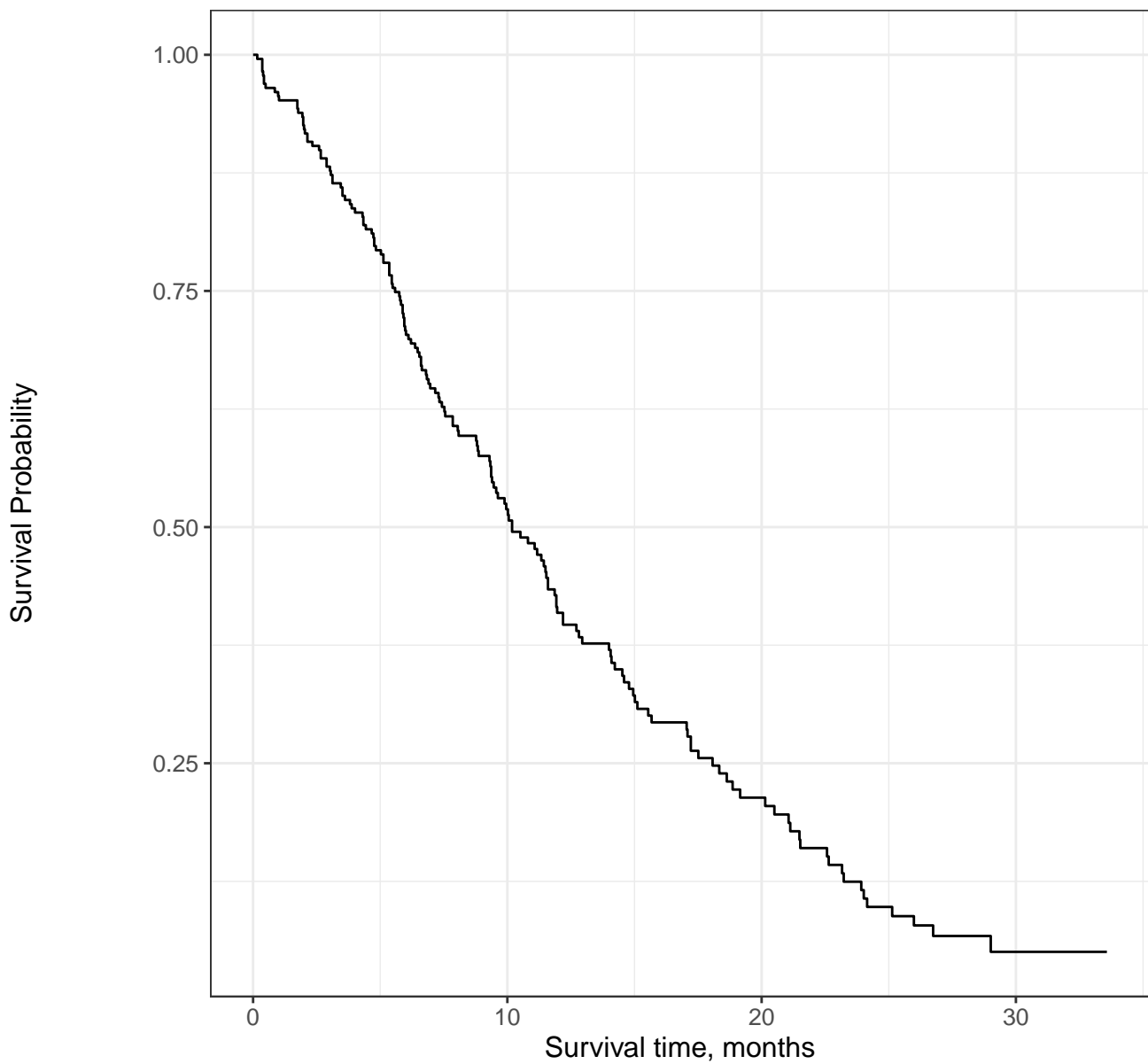
Female, Symptomatic and ambulatory

At Risk

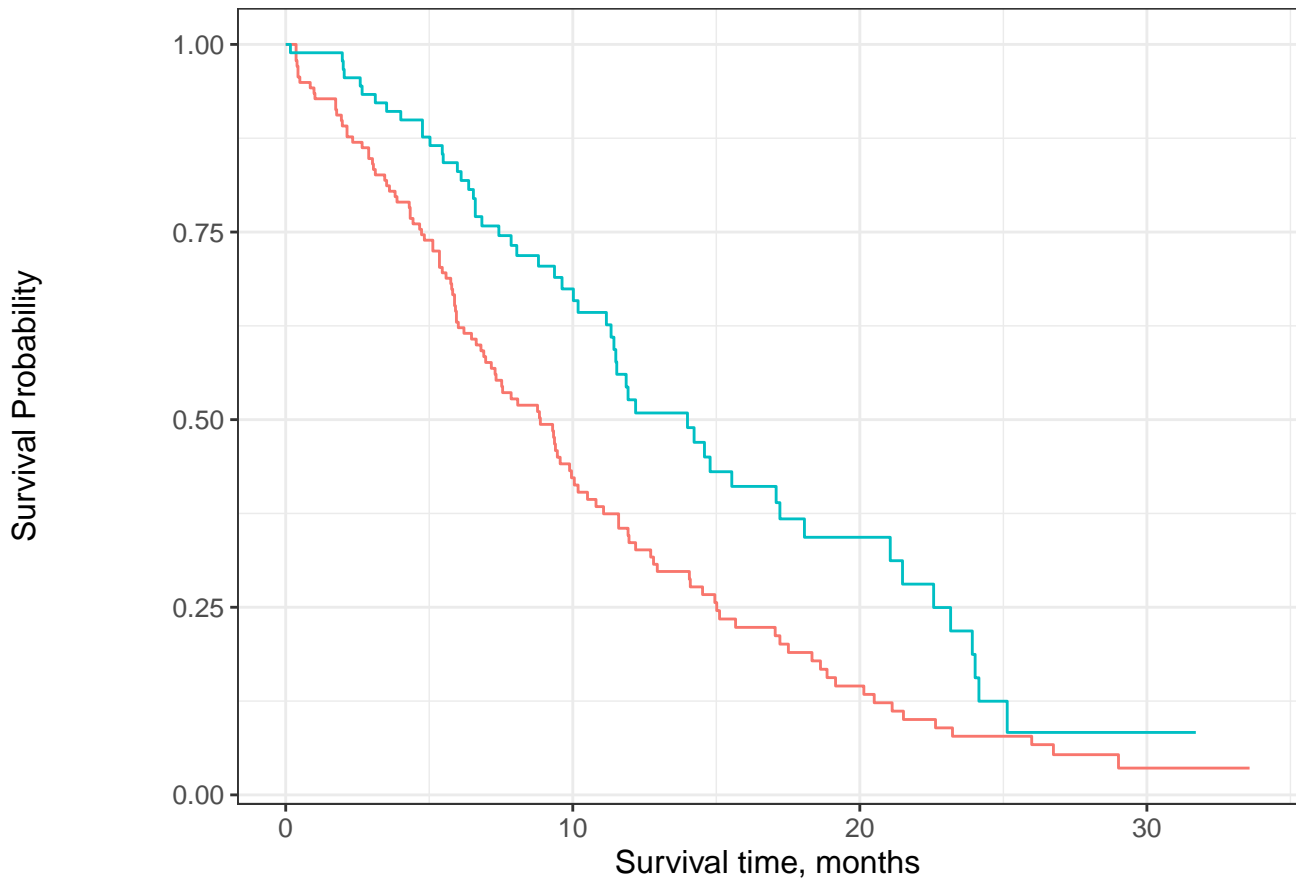
Male, Asymptomatic	36	18	6	1
Male, Symptomatic and ambulatory	71	20	5	1
Male, In bed <50% of the day	29	6	2	0
Male, In bed > 50% of the day	1	0	0	0
Female, Asymptomatic	27	13	2	0
Female, Symptomatic and ambulatory	42	23	8	1
Female, In bed <50% of the day	21	7	1	0

CUM EVENTS

Male, Asymptomatic	0	13	24	28
Male, Symptomatic and ambulatory	0	39	51	54
Male, In bed <50% of the day	0	22	26	28
Male, In bed > 50% of the day	0	1	1	1
Female, Asymptomatic	0	4	8	9
Female, Symptomatic and ambulatory	0	12	22	28
Female, In bed <50% of the day	0	11	15	16



N RISK	228	87	24	3
CUM EVENTS	0	103	148	165



Male Female

Male

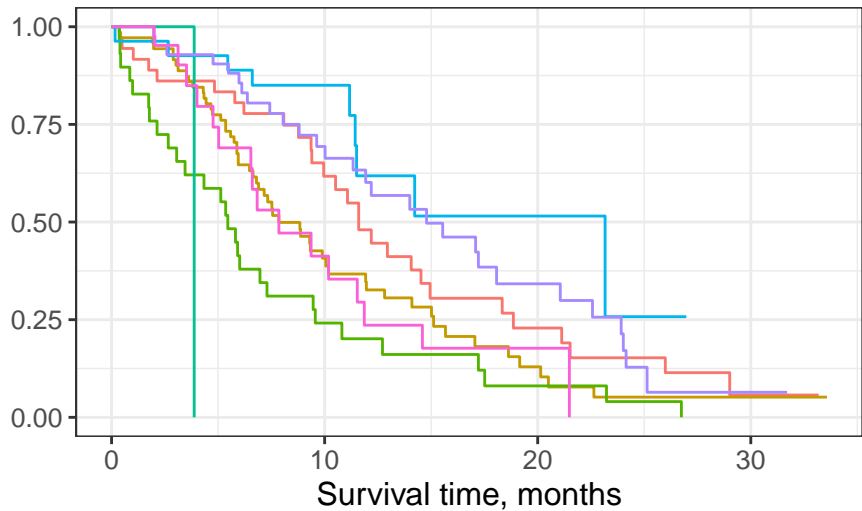
N RISK	138	44	13	2
CUM EVENTS	0	76	103	112

Female

N RISK	90	43	11	1
CUM EVENTS	0	27	45	53



Survival Probability



Male, Asymptomatic

Male, In bed <50% of the day

Female, Asymptomatic

Male, Symptomatic and ambulatory

Male, In bed > 50% of the day

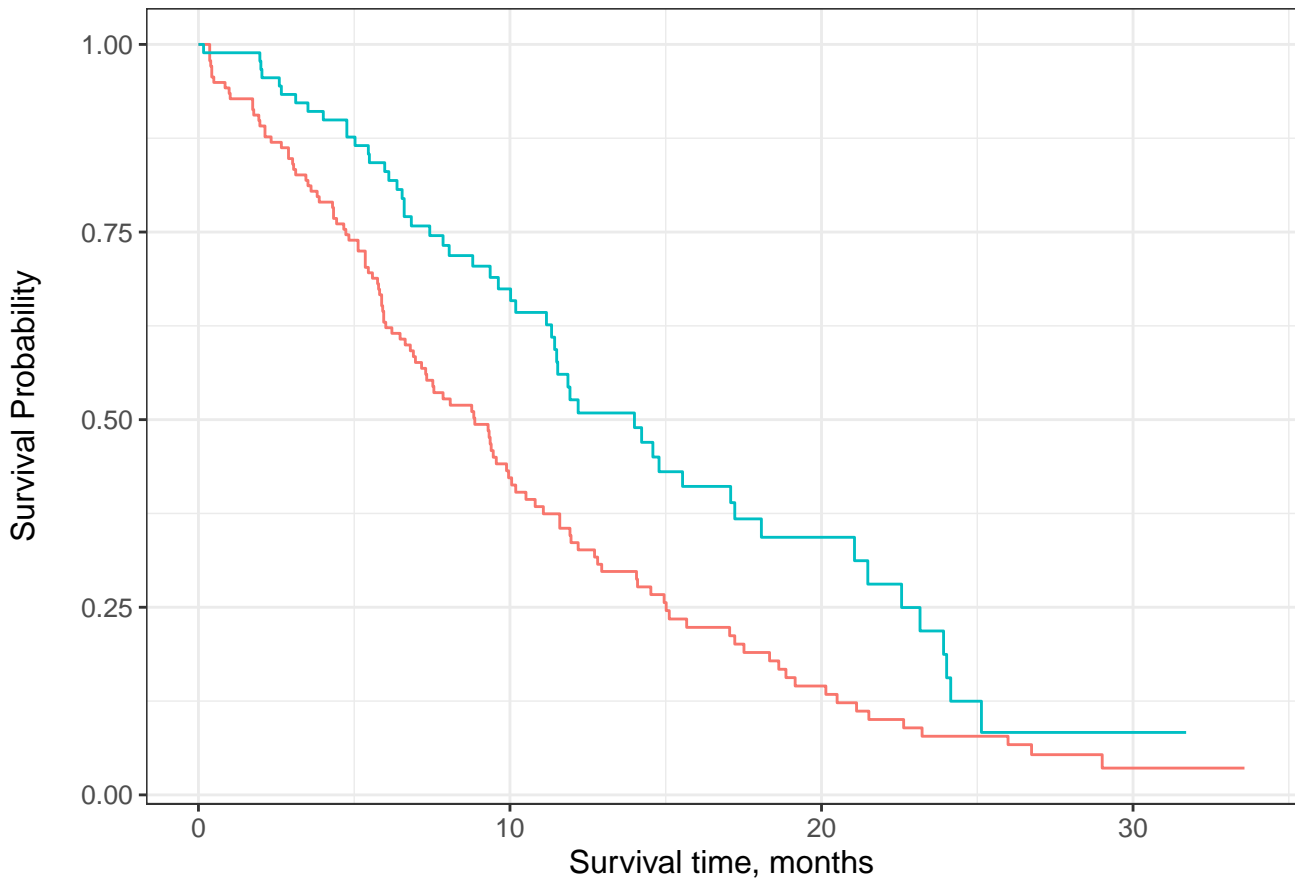
Female, Symptomatic and ambulatory

N RISK

Male, Asymptomatic	36	18	6	1
Male, Symptomatic and ambulatory	71	20	5	1
Male, In bed <50% of the day	29	6	2	0
Male, In bed > 50% of the day	1	0	0	0
Female, Asymptomatic	27	13	2	0
Female, Symptomatic and ambulatory	42	23	8	1
Female, In bed <50% of the day	21	7	1	0

CUM EVENTS

Male, Asymptomatic	0	13	24	28
Male, Symptomatic and ambulatory	0	39	51	54
Male, In bed <50% of the day	0	22	26	28
Male, In bed > 50% of the day	0	1	1	1
Female, Asymptomatic	0	4	8	9
Female, Symptomatic and ambulatory	0	12	22	28
Female, In bed <50% of the day	0	11	15	16

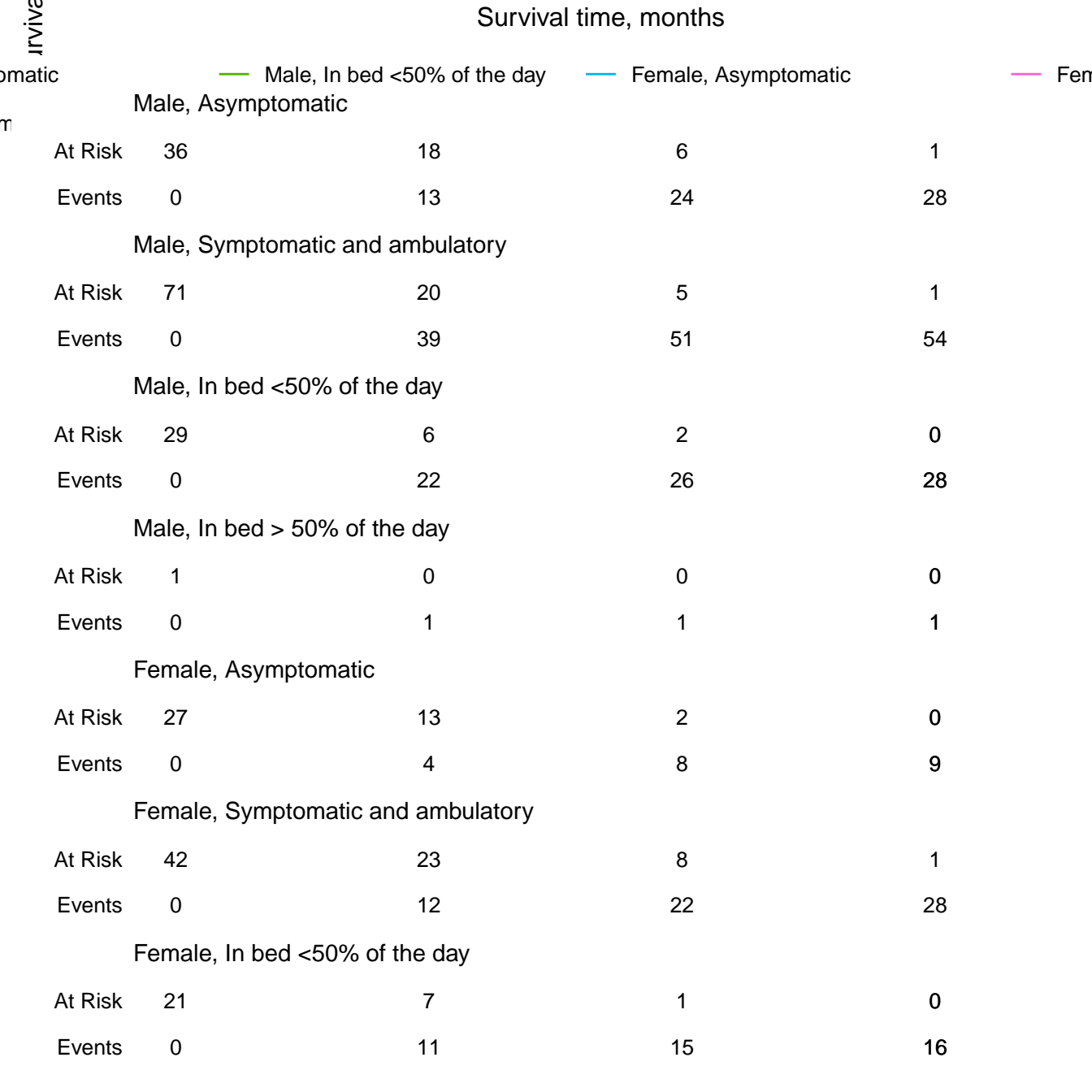


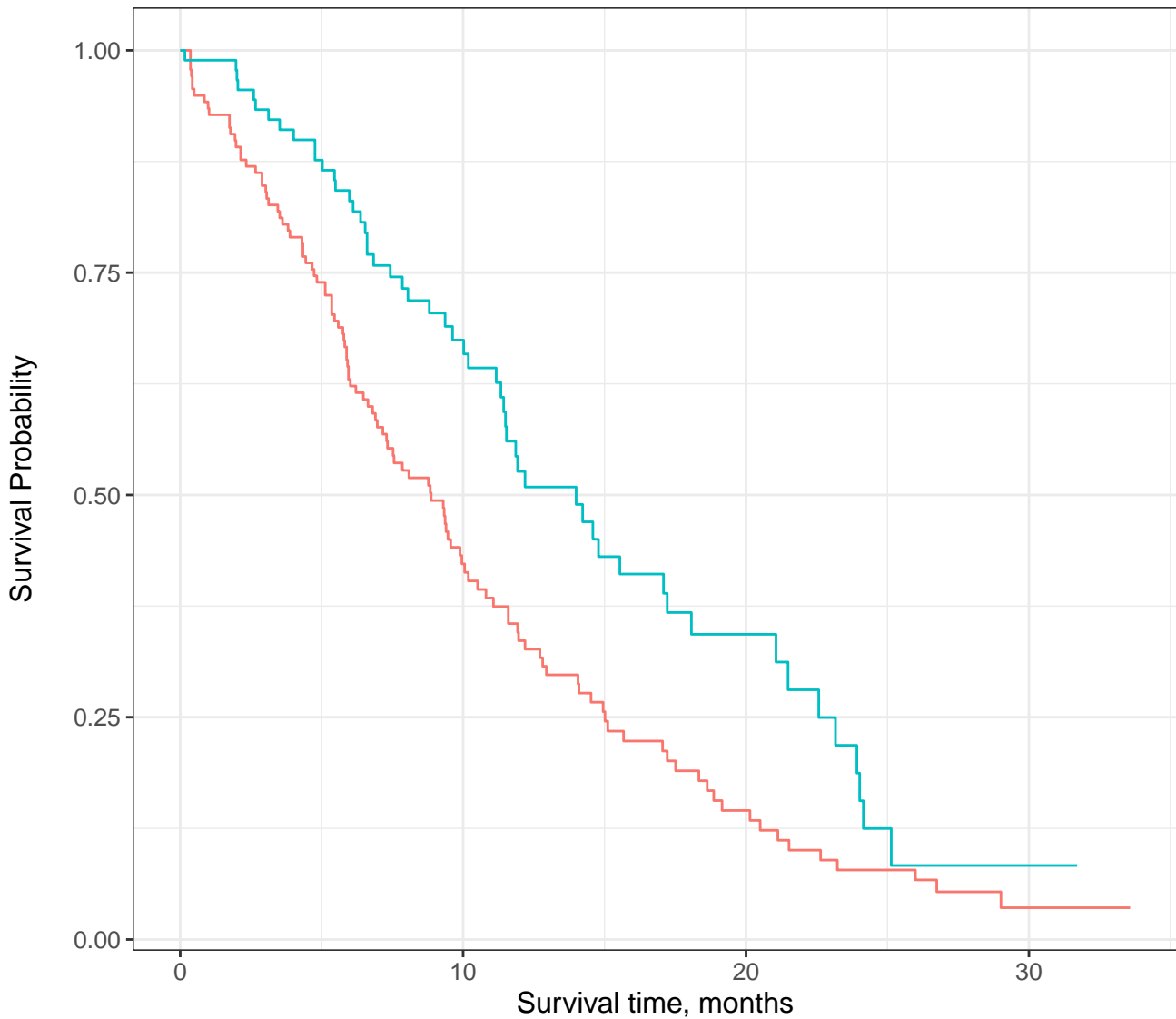
### Male

At Risk	138	44	13	2
Events	0	76	103	112

### Female

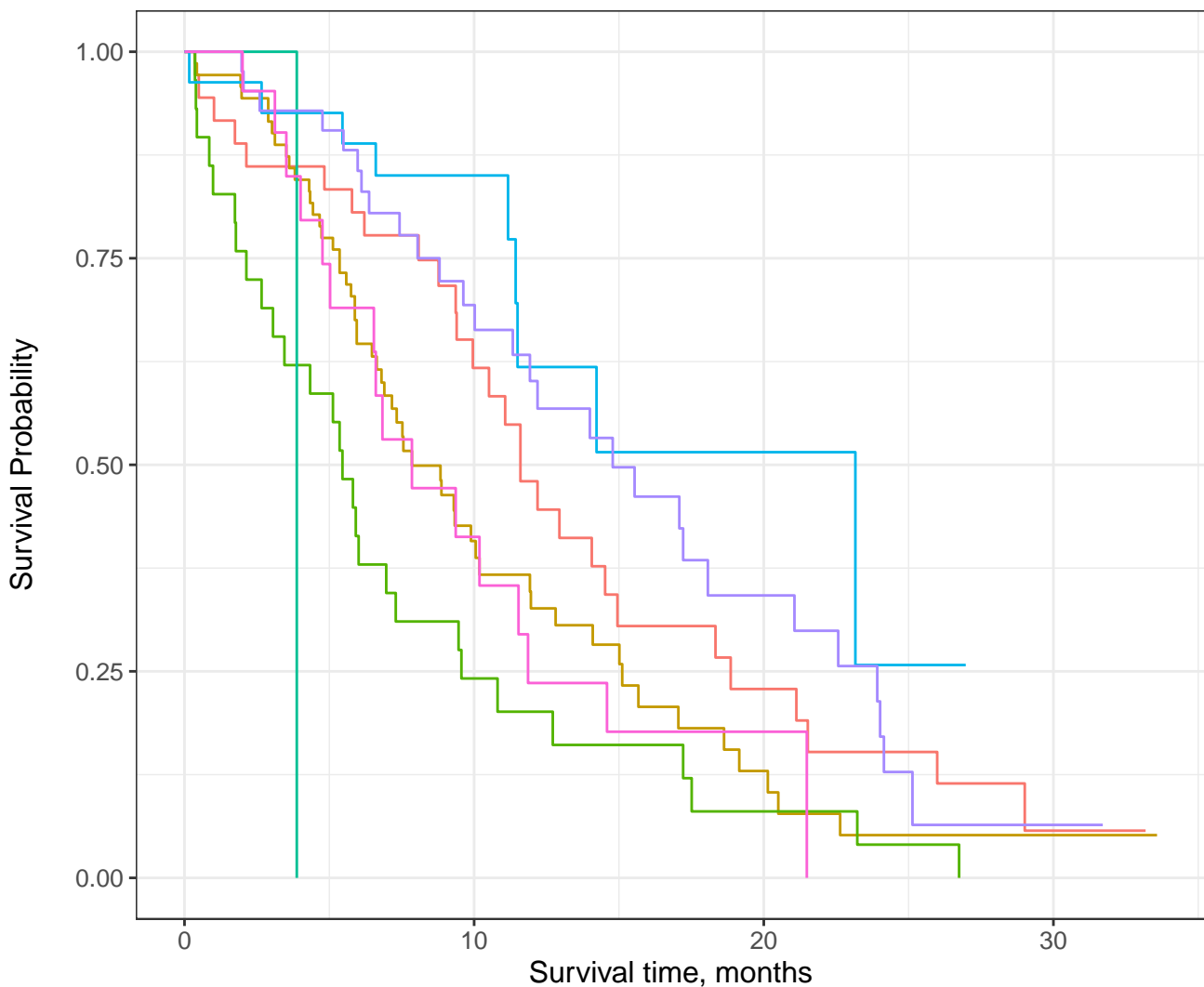
At Risk	90	43	11	1
Events	0	27	45	53





— Male — Female

At Risk	228	87	24	3
Events	0	103	148	165



Asymptomatic  
 Asymptomatic and ambulatory  
 At Risk  
 Events

Male, In bed <50% of the day  
 Male, In bed > 50% of the day

Female, Asymptomatic  
 Female, Symptomatic and ambulatory

Female, Asymptomatic and ambulatory  
 Female, Symptomatic

227

87

24

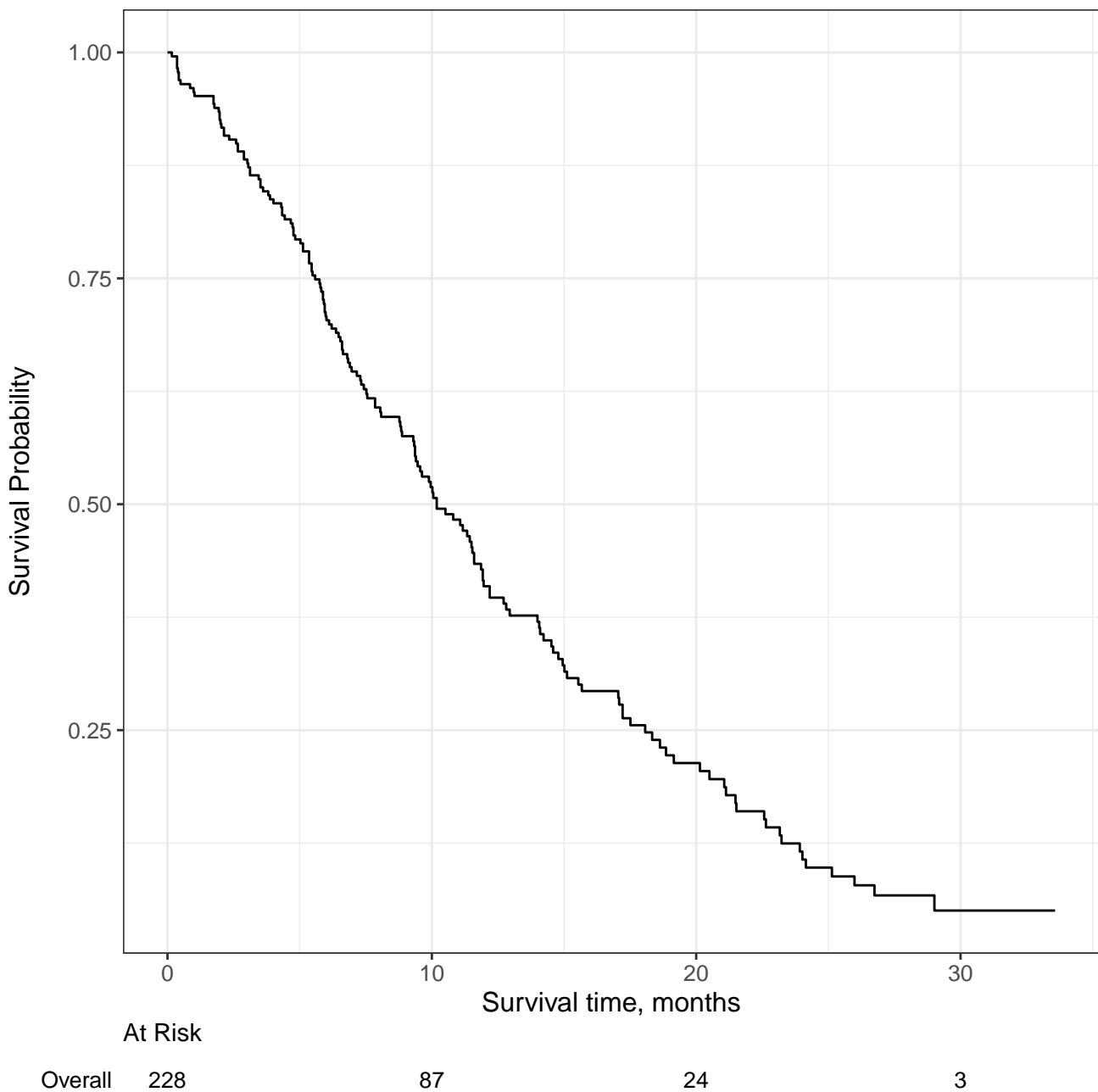
3

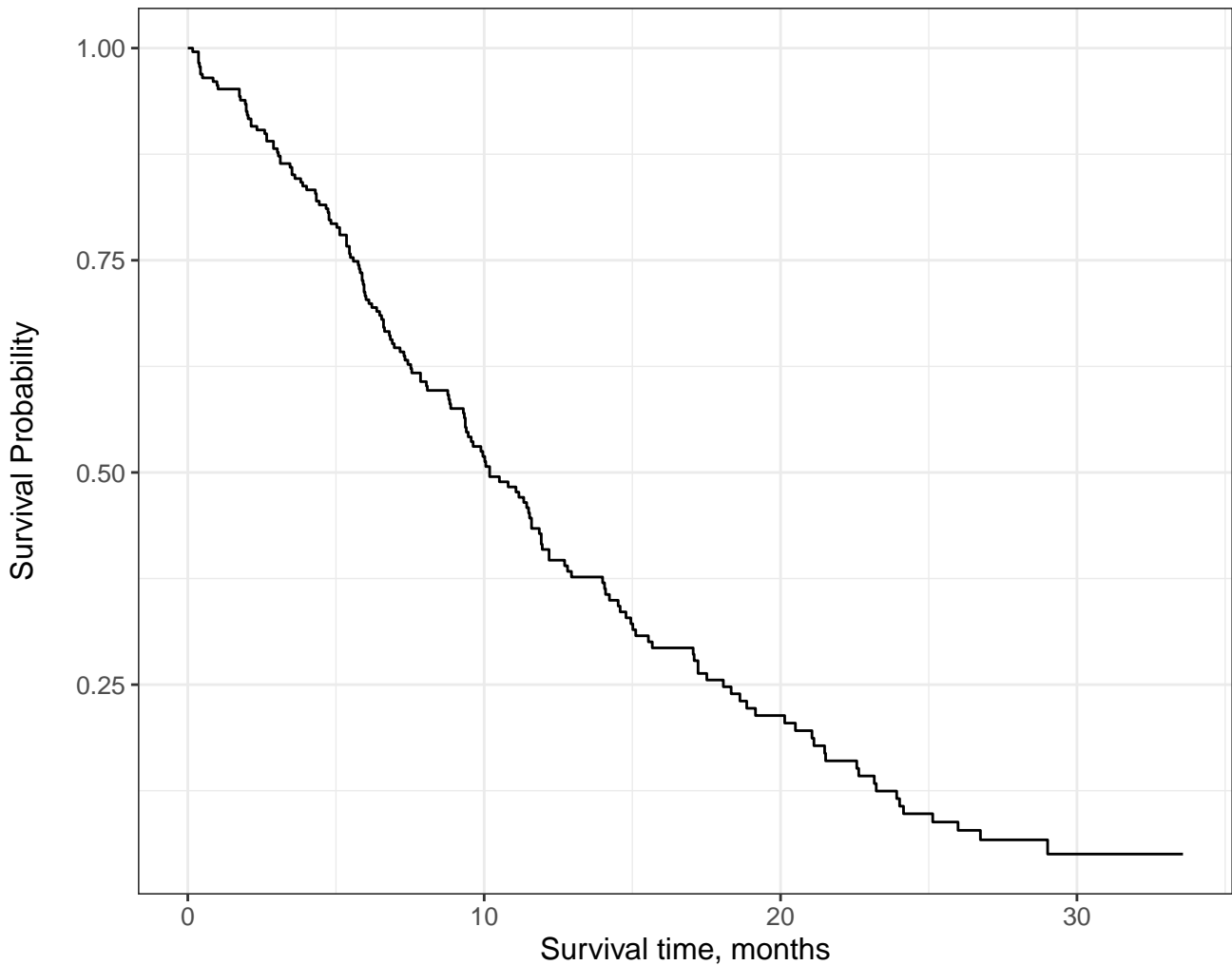
0

102

147

218



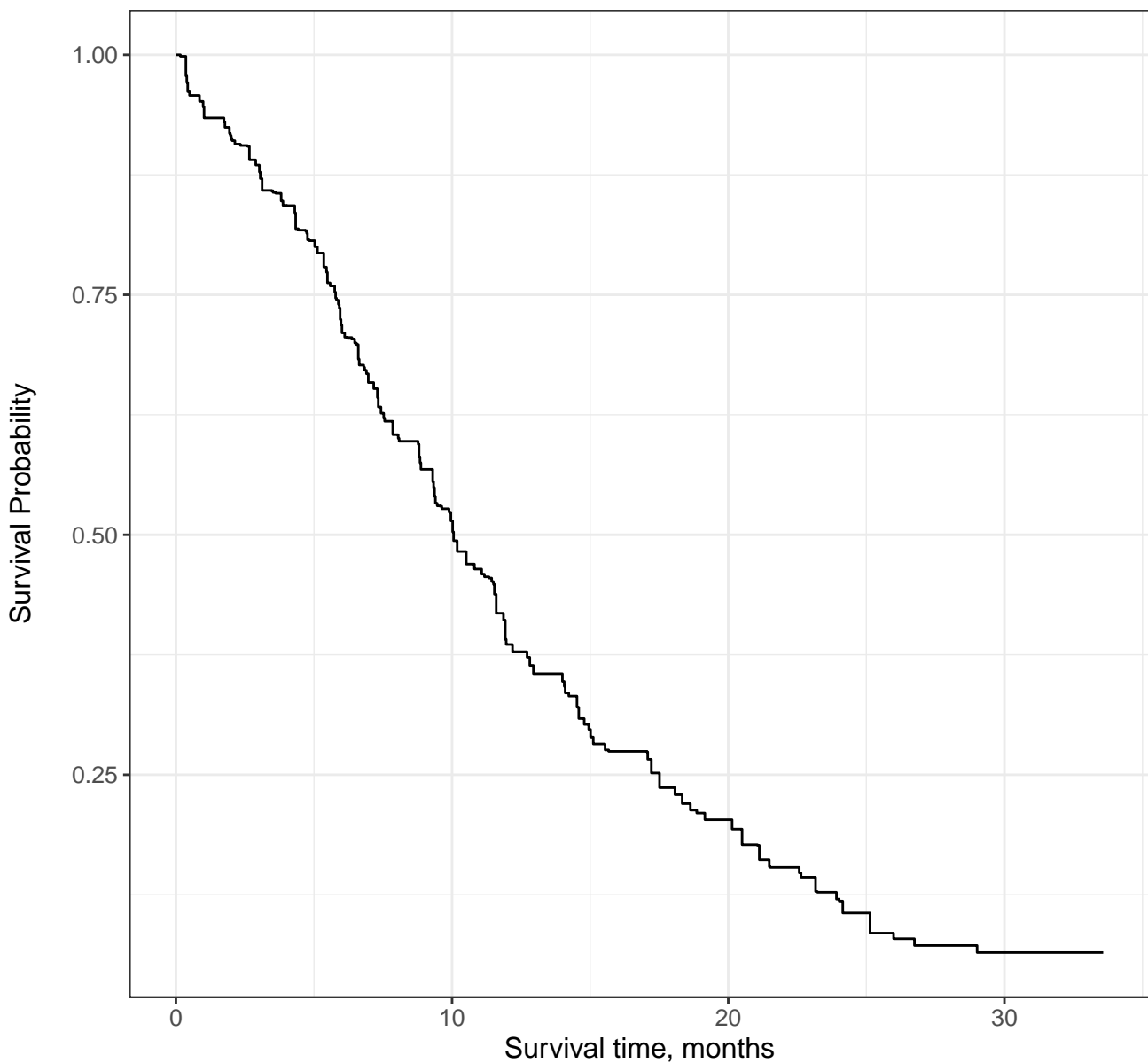


At Risk

	0	5	10	15	20	25	30
Overall	228	187	87	44	24	10	3

Events

	0	5	10	15	20	25	30
Overall	0	103	148	165			



At Risk	187	71	17	2
Events	0	85	122	133



Survival Probability

1.00  
0.75  
0.50  
0.25

Survival time, months

0

10

20

30

At Risk

228

87

24

3

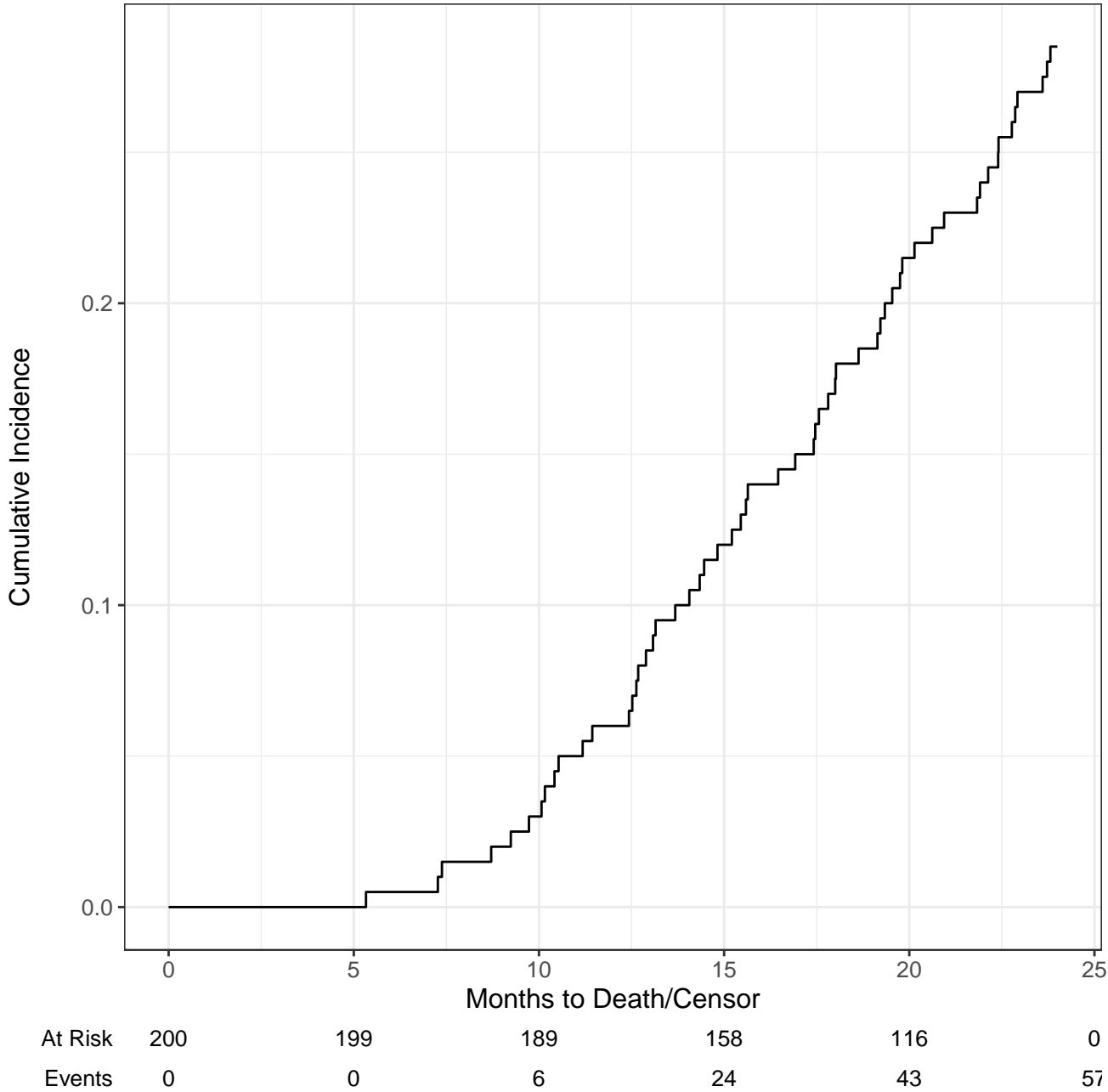
Events

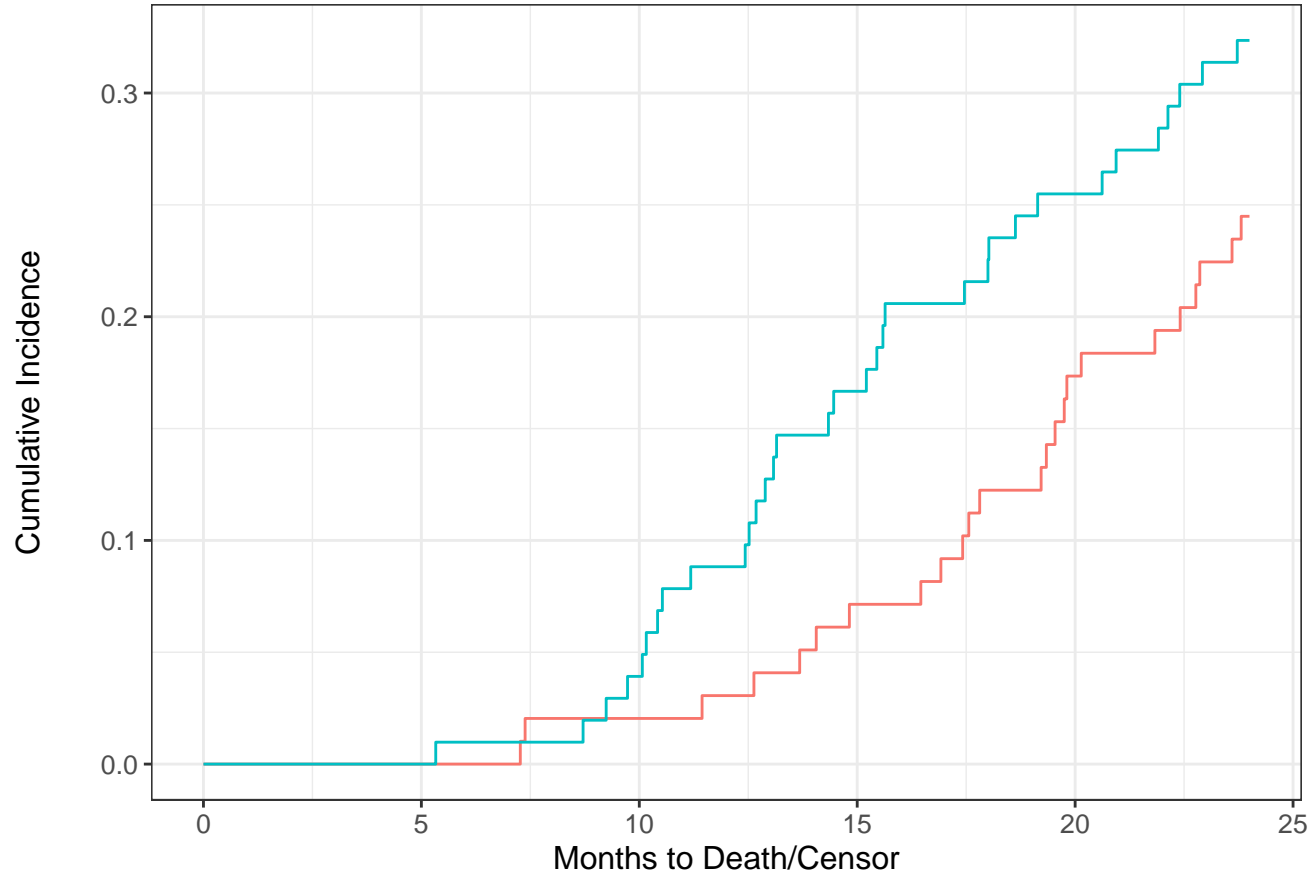
0

103

148

165





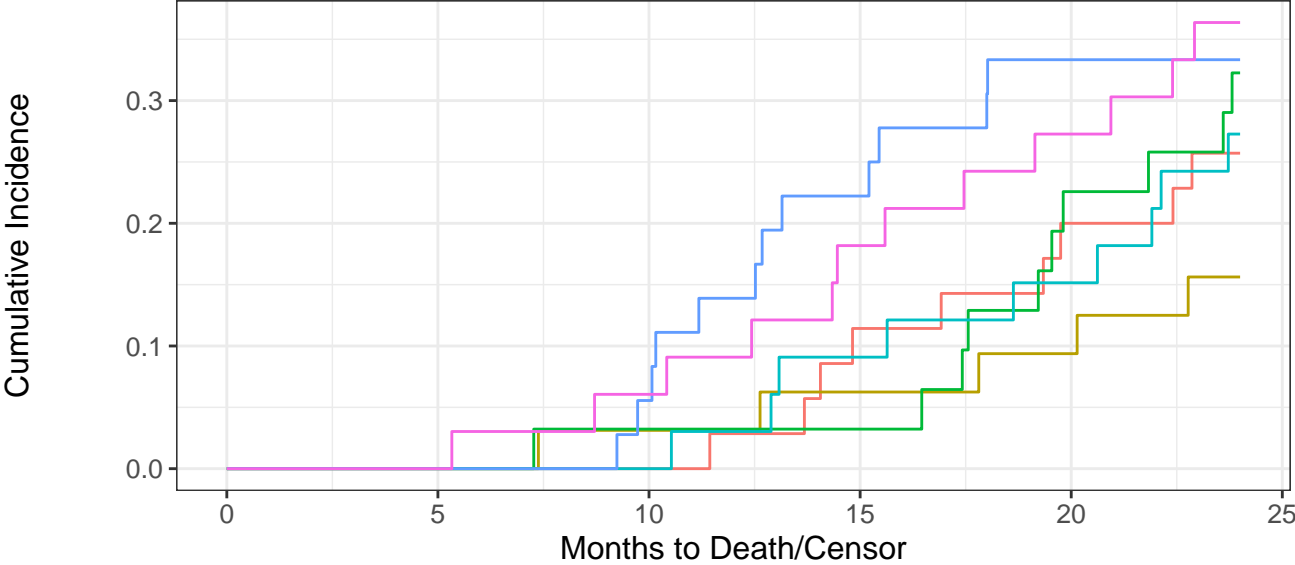
— Drug A — Drug B

#### Drug A

At Risk	98	97	94	83	61	0
Events	0	0	2	7	17	24

#### Drug B

At Risk	102	102	95	75	55	0
Events	0	0	4	17	26	33



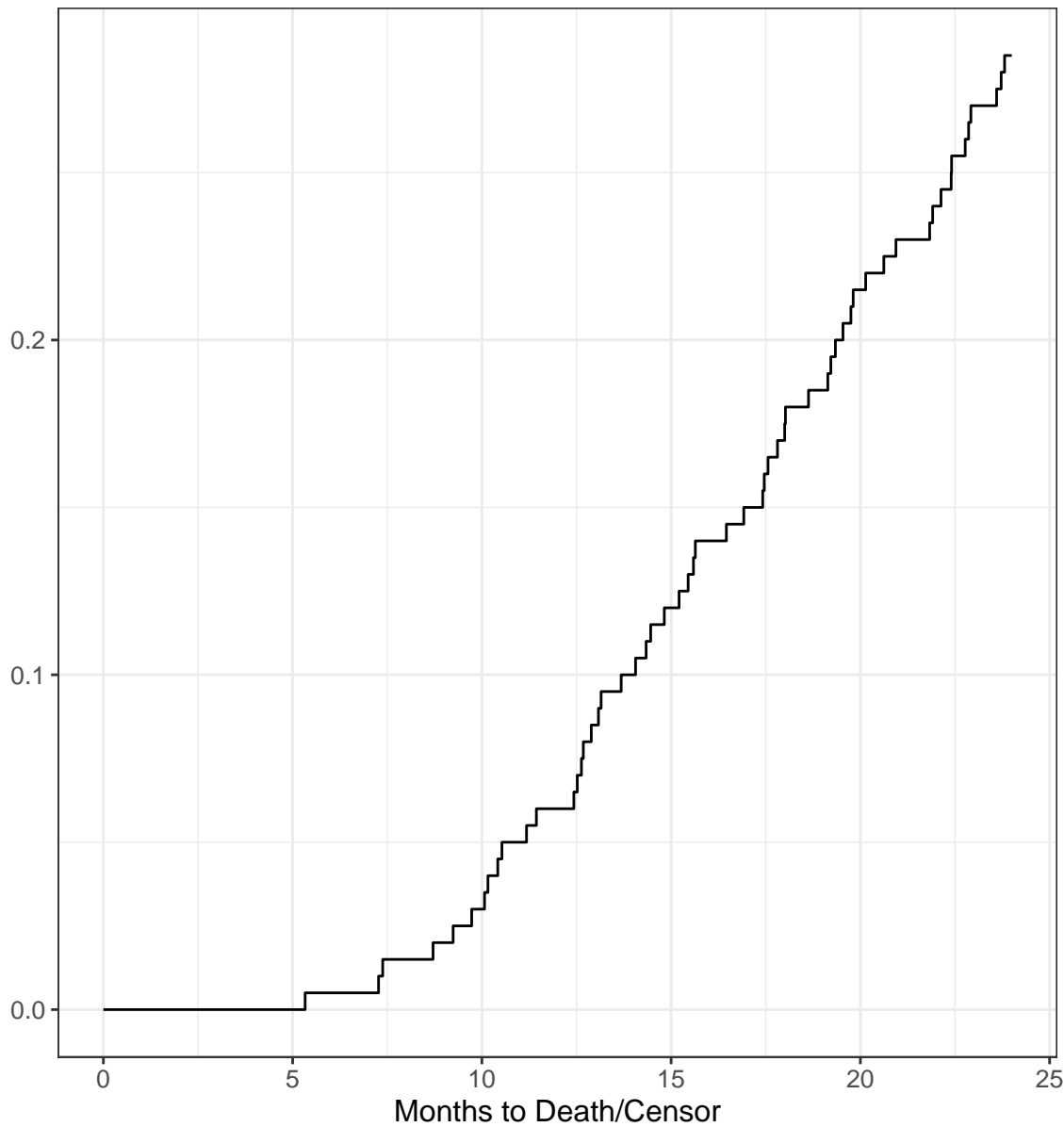
At Risk

Drug A, I	35	35	35	30	22	0
Drug A, II	32	32	30	27	23	0
Drug A, III	31	30	29	26	16	0
Drug B, I	33	33	33	28	23	0
Drug B, II	36	36	32	23	17	0
Drug B, III	33	33	30	24	15	0

Events

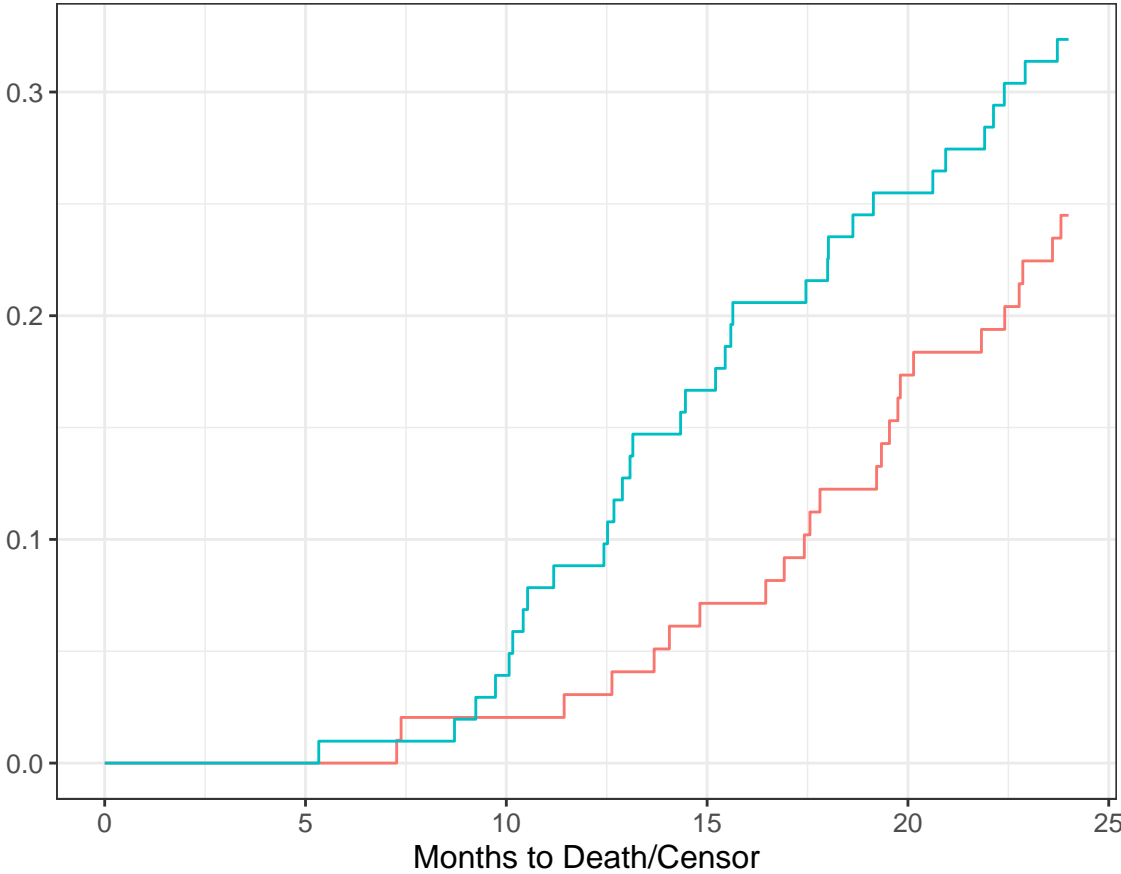
Drug A, I	0	0	0	4	7	9
Drug A, II	0	0	1	2	3	5
Drug A, III	0	0	1	1	7	10
Drug B, I	0	0	0	3	5	9
Drug B, II	0	0	2	8	12	12
Drug B, III	0	0	2	6	9	12

Cumulative Incidence



At Risk	200	199	189	158	116	0
CUM EVENTS	0	0	6	24	43	57

Cumulative Incidence



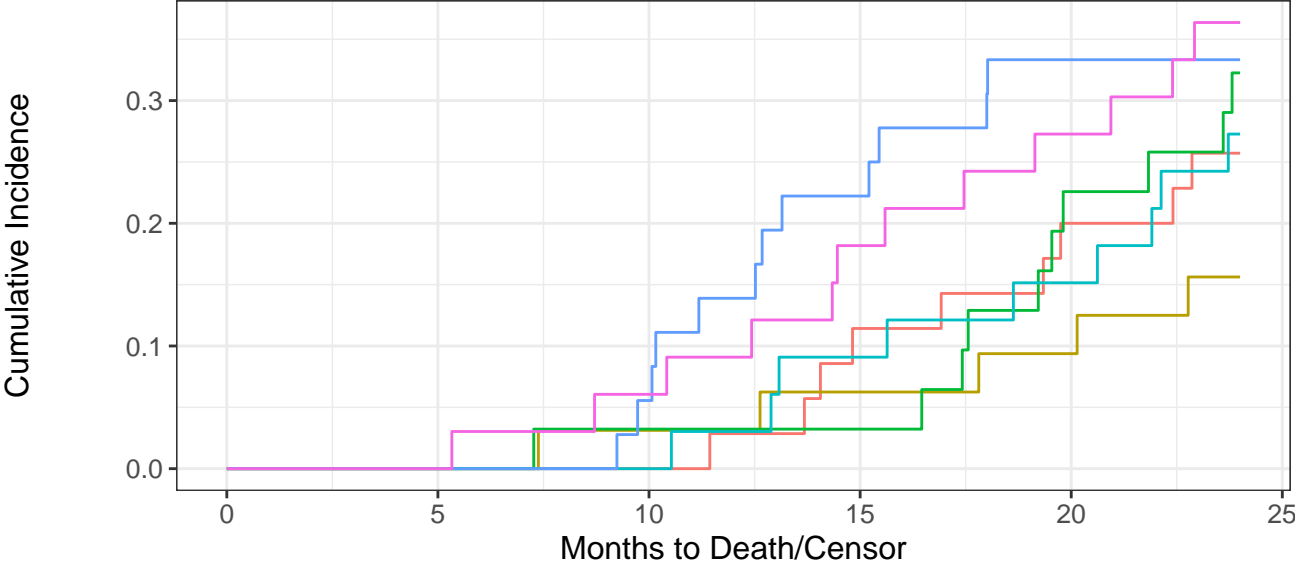
Drug A Drug B

Drug A

At Risk	98	97	94	83	61	0
CUM EVENTS	0	0	2	7	17	24

Drug B

At Risk	102	102	95	75	55	0
CUM EVENTS	0	0	4	17	26	33

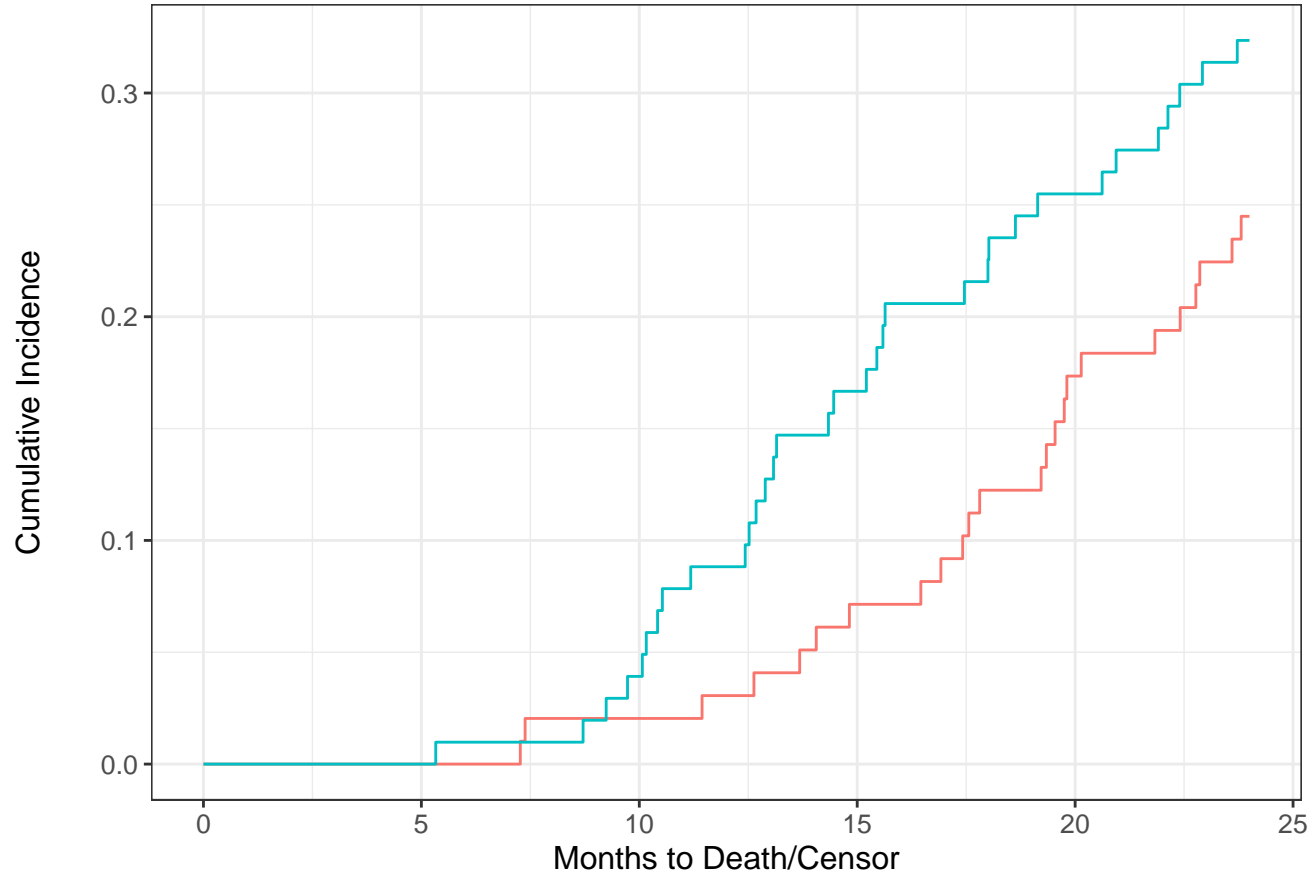


At Risk

Drug A, I	35	35	35	30	22	0
Drug A, II	32	32	30	27	23	0
Drug A, III	31	30	29	26	16	0
Drug B, I	33	33	33	28	23	0
Drug B, II	36	36	32	23	17	0
Drug B, III	33	33	30	24	15	0

CUM EVENTS

Drug A, I	0	0	0	4	7	9
Drug A, II	0	0	1	2	3	5
Drug A, III	0	0	1	1	7	10
Drug B, I	0	0	0	3	5	9
Drug B, II	0	0	2	8	12	12
Drug B, III	0	0	2	6	9	12



— Drug A — Drug B

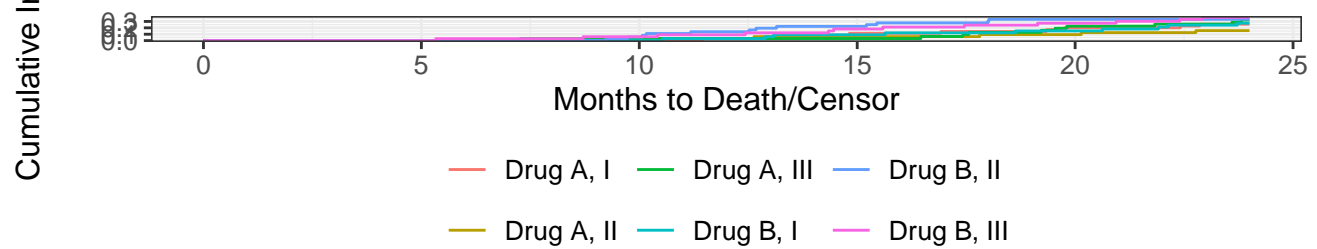
#### Drug A

At Risk	98	97	94	83	61	0
Events	0	0	2	7	17	24

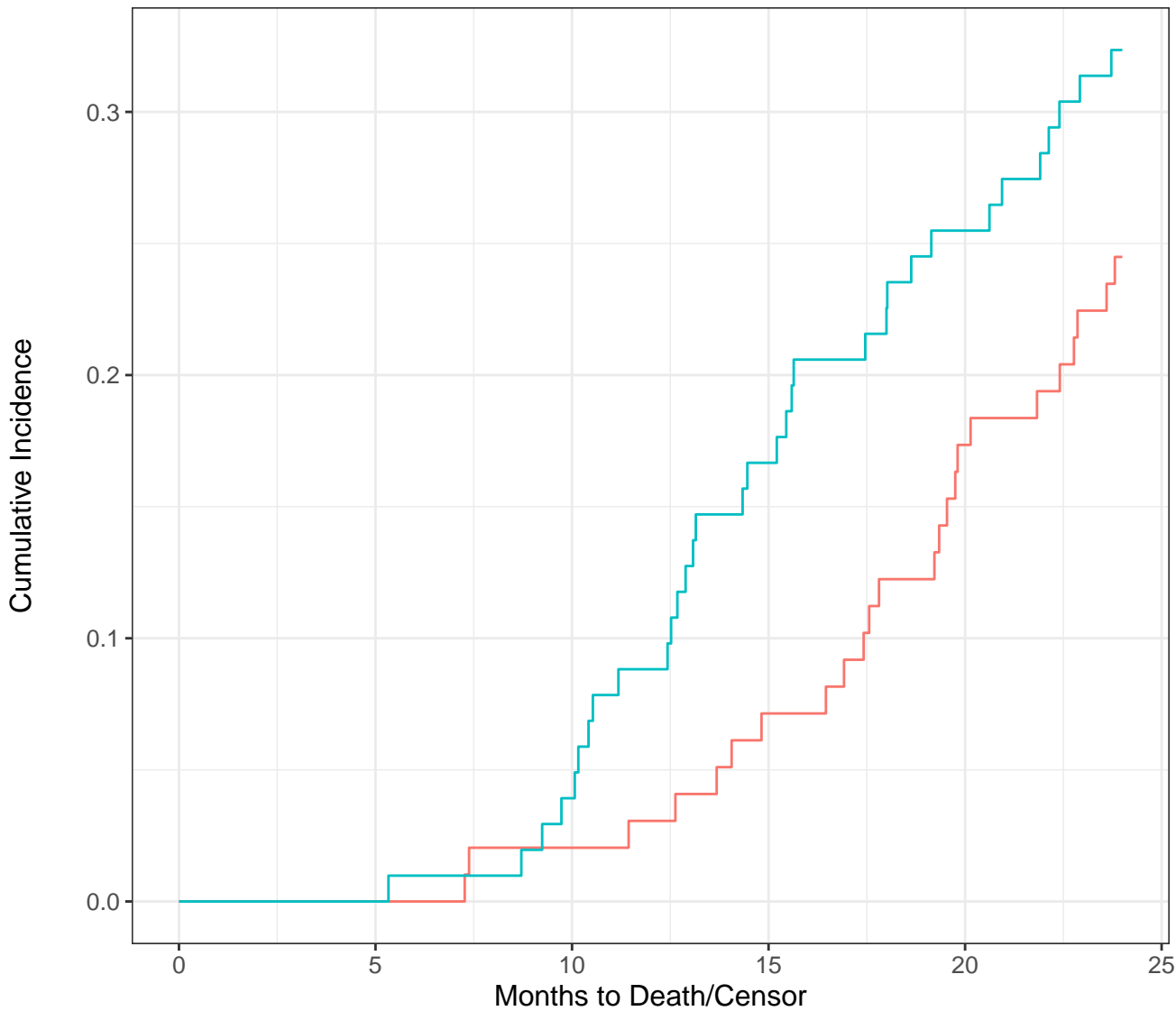
#### Drug B

At Risk	102	102	95	75	55	0
Events	0	0	4	17	26	33



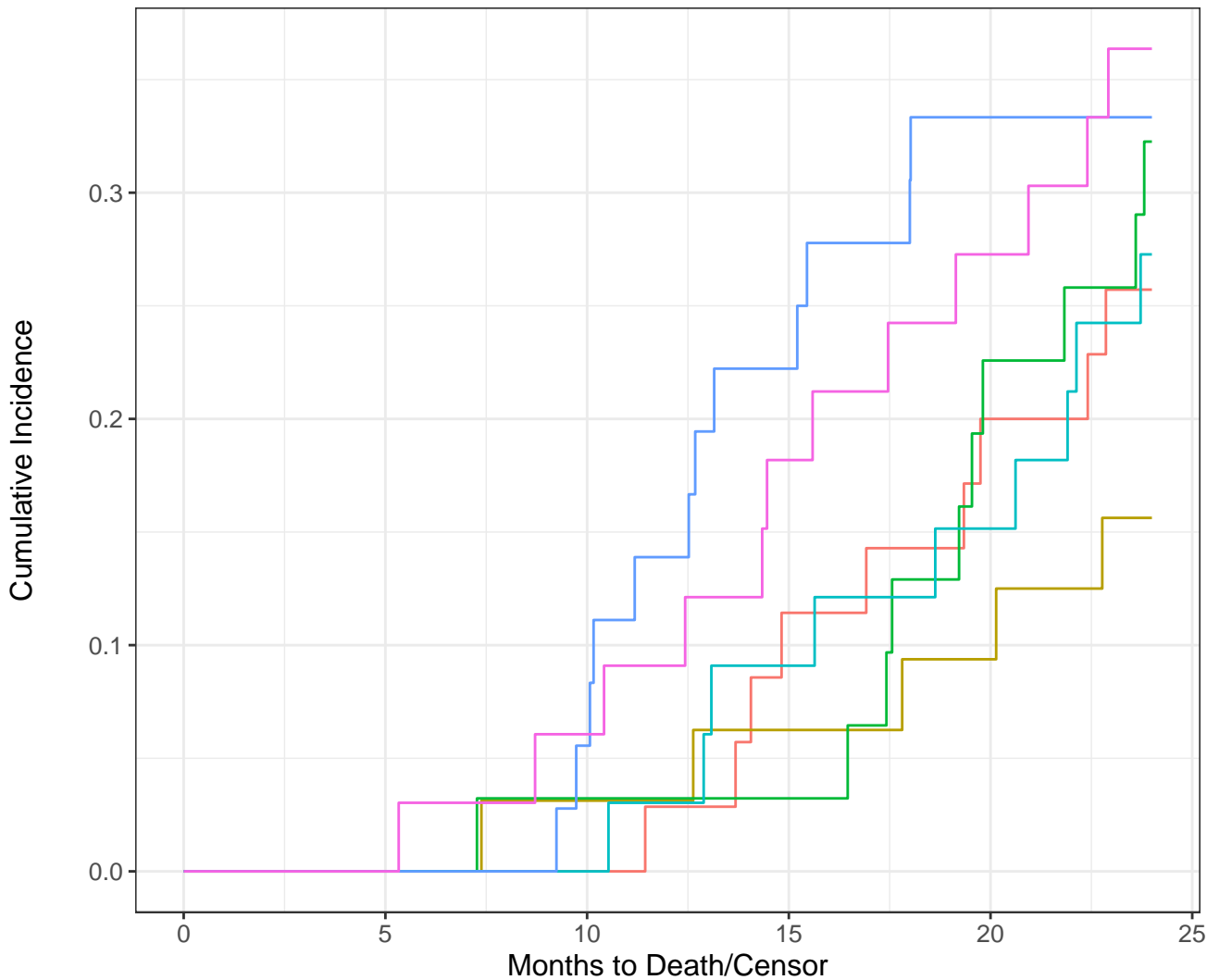


Drug A, I						
At Risk	35	35	35	30	22	0
Events	0	0	0	4	7	9
Drug A, II						
At Risk	32	32	30	27	23	0
Events	0	0	1	2	3	5
Drug A, III						
At Risk	31	30	29	26	16	0
Events	0	0	1	1	7	10
Drug B, I						
At Risk	33	33	33	28	23	0
Events	0	0	0	3	5	9
Drug B, II						
At Risk	36	36	32	23	17	0
Events	0	0	2	8	12	12
Drug B, III						
At Risk	33	33	30	24	15	0
Events	0	0	2	6	9	12



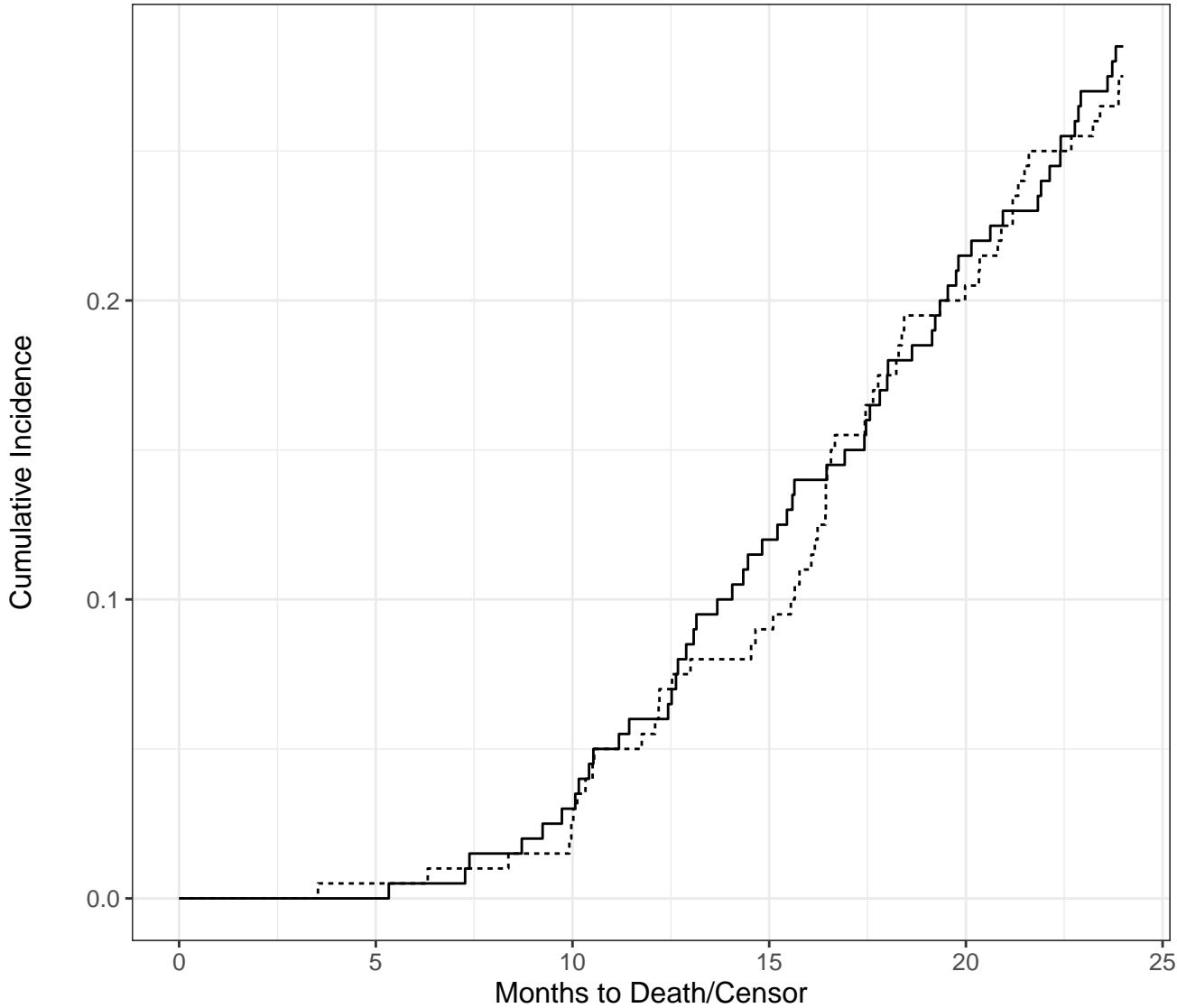
— Drug A — Drug B

At Risk	200	199	189	158	116	0
Events	0	0	6	24	43	57

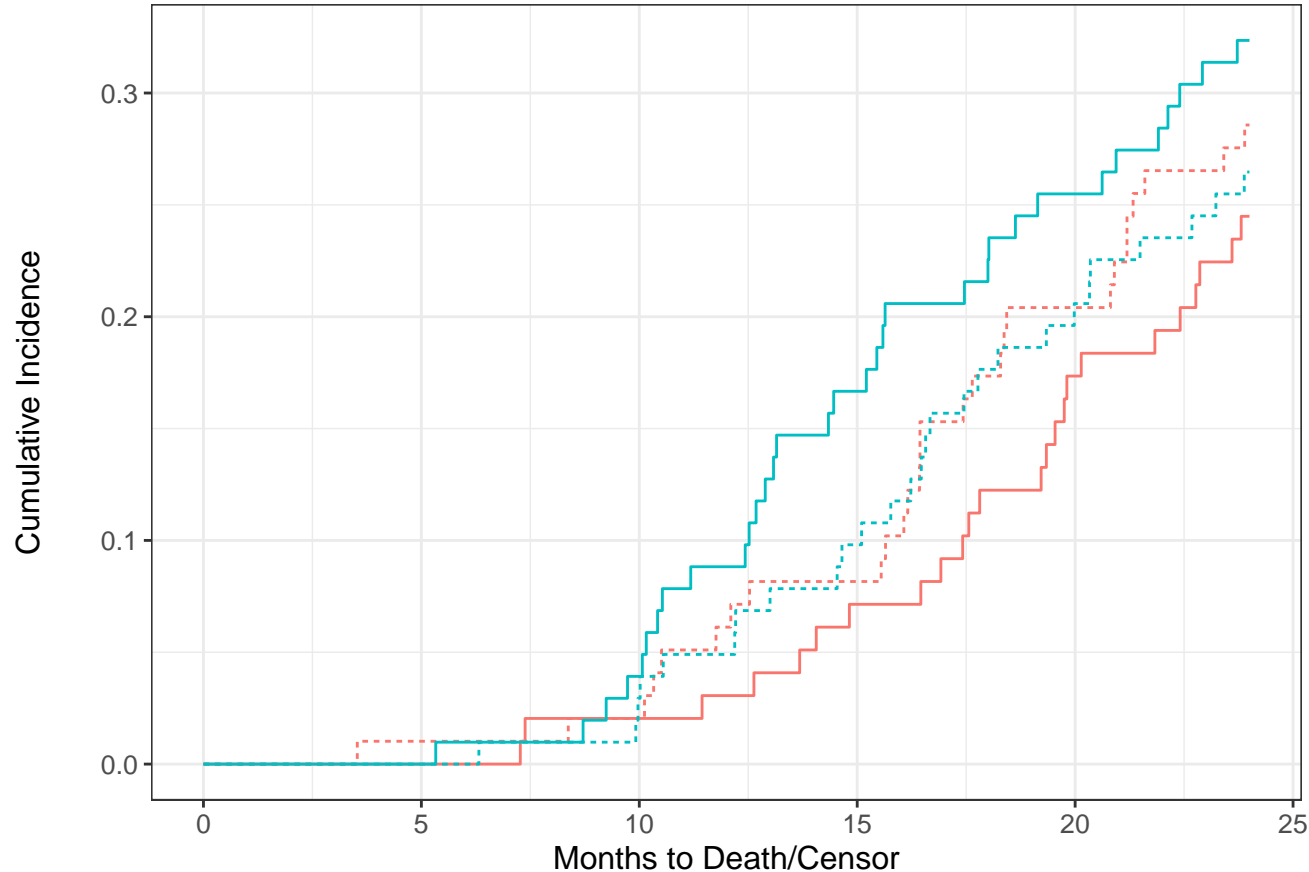


— Drug A, I    — Drug A, III    — Drug B, II  
— Drug A, II    — Drug B, I    — Drug B, III

At Risk	200	199	189	158	116	0
Events	0	0	6	24	43	57



At Risk	200	199	189	158	116	0
Events	0	1	11	42	84	11

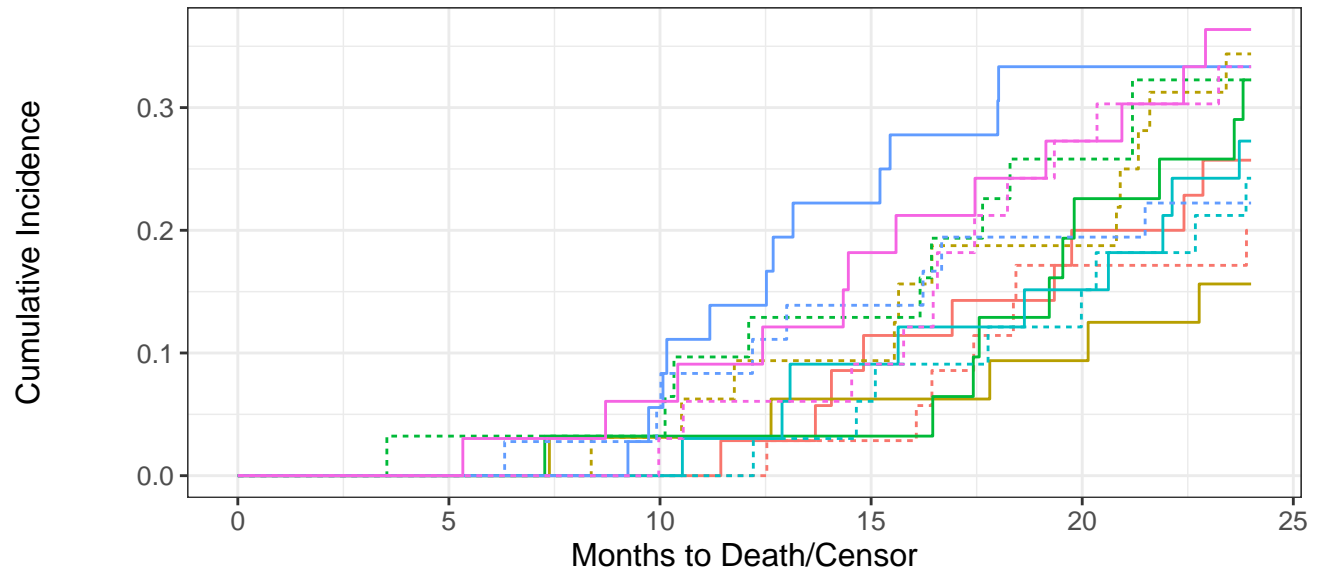


#### Drug A

At Risk	98	97	94	83	61	0
Events	0	1	4	15	37	52

#### Drug B

At Risk	102	102	95	75	55	0
Events	0	0	7	27	47	60



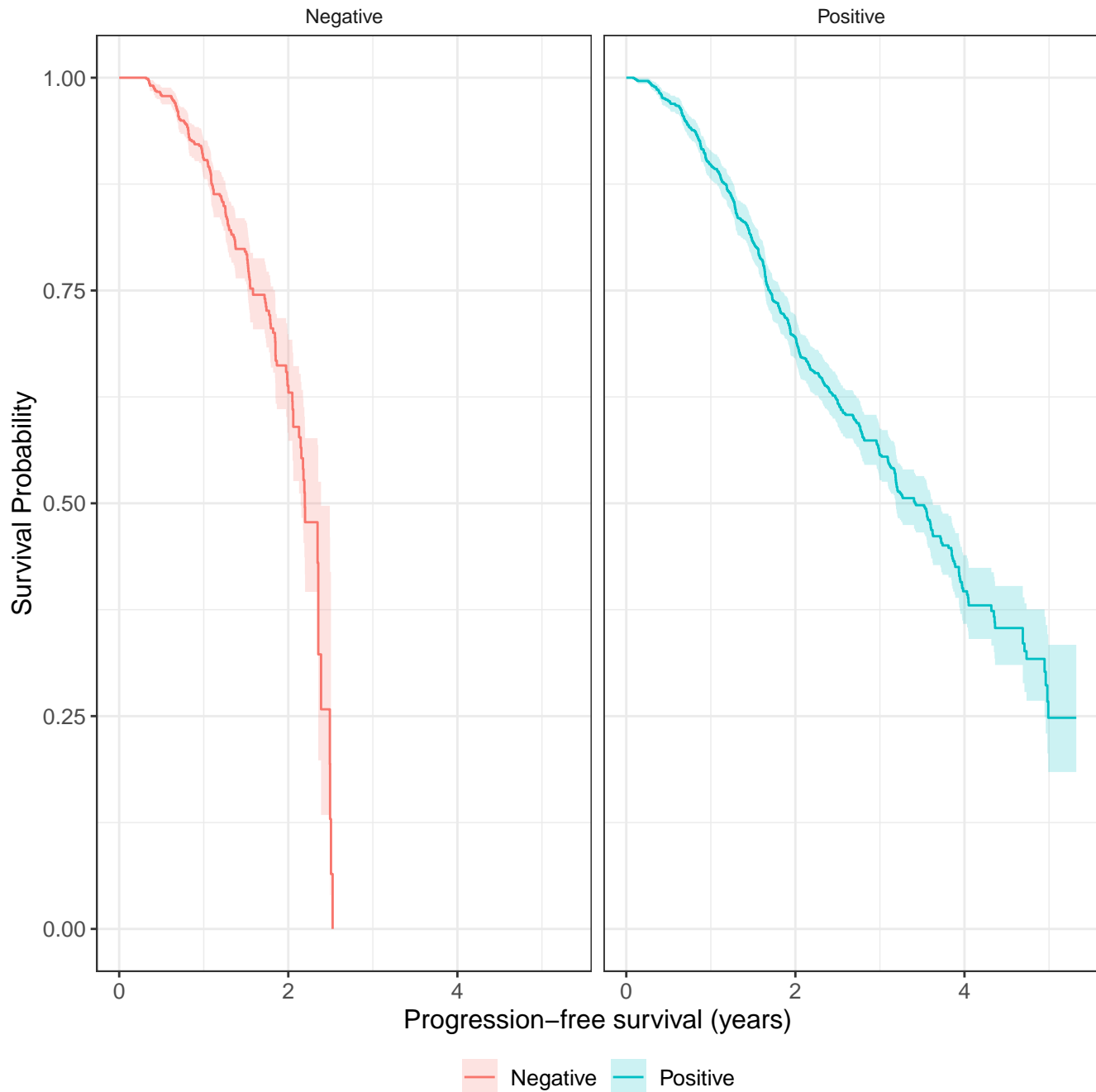
— Drug A, I   
 — Drug A, III   
 — Drug B, II   
 — death from cancer   
 .... death other causes  
— Drug A, II   
— Drug B, I   
— Drug B, III

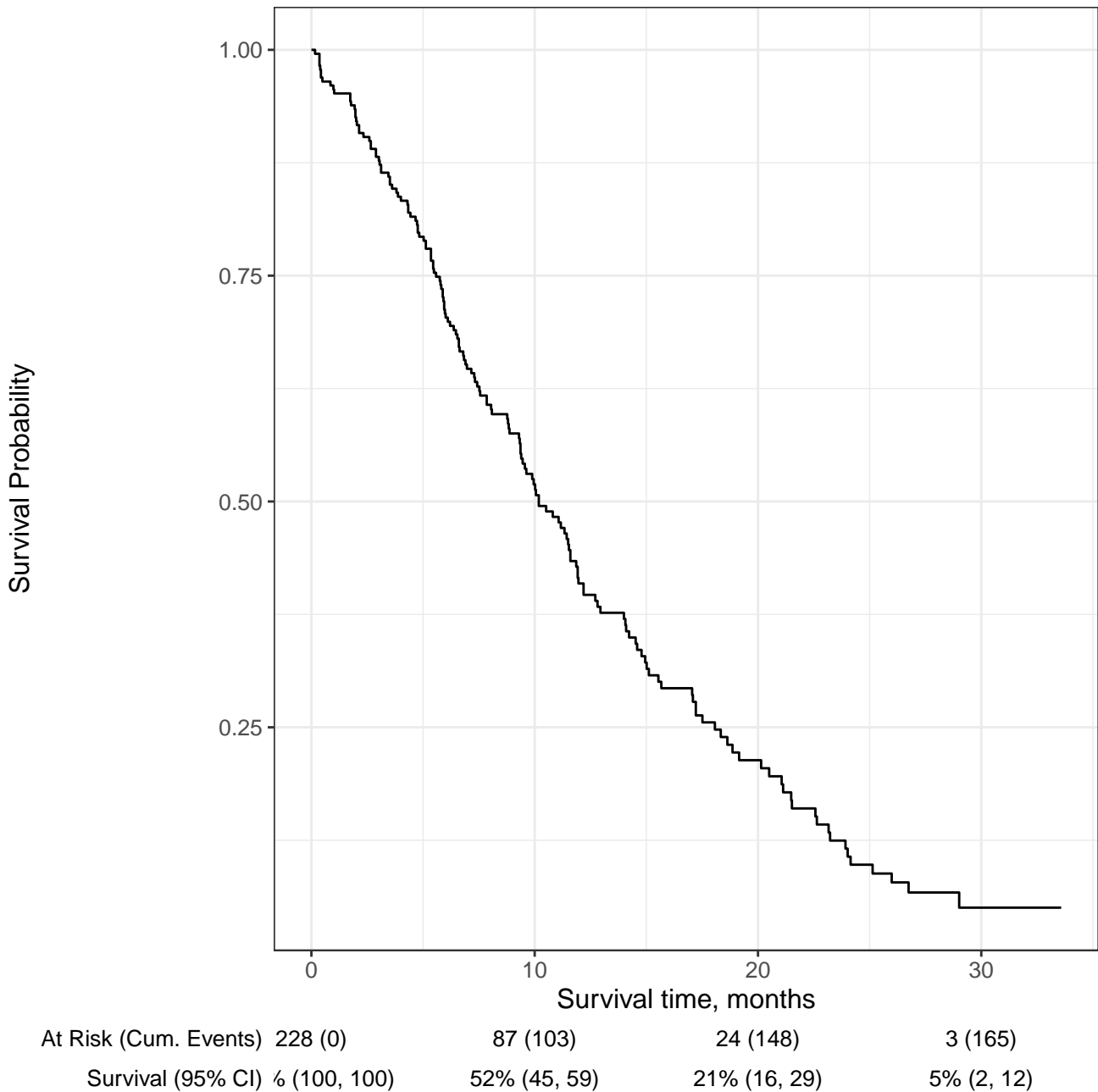
#### At Risk

Drug A, I	35	35	35	30	22	0
Drug A, II	32	32	30	27	23	0
Drug A, III	31	30	29	26	16	0
Drug B, I	33	33	33	28	23	0
Drug B, II	36	36	32	23	17	0
Drug B, III	33	33	30	24	15	0

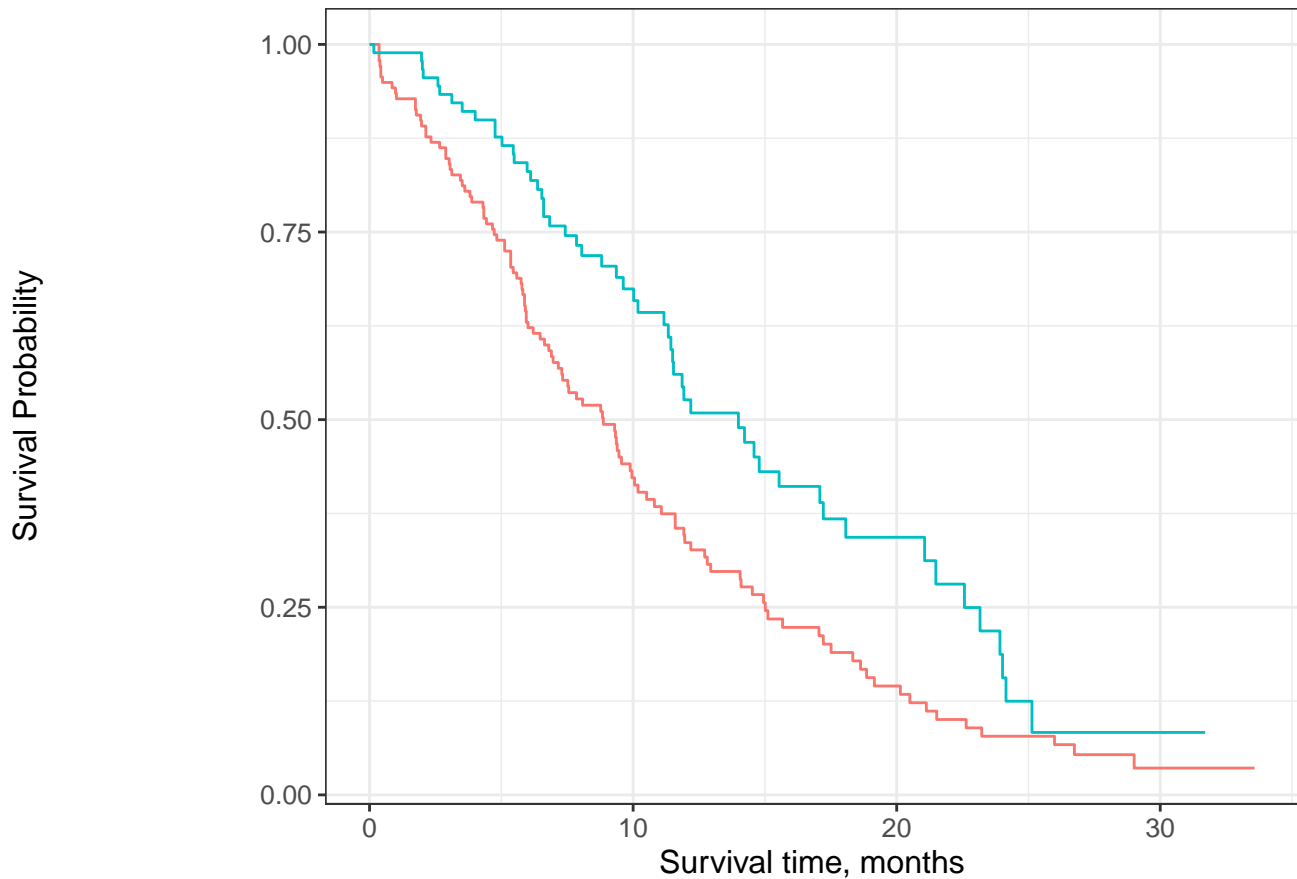
#### Events

Drug A, I	0	0	0	5	13	16
Drug A, II	0	0	2	5	9	16
Drug A, III	0	1	2	5	15	20
Drug B, I	0	0	0	5	10	17
Drug B, II	0	0	4	13	19	20
Drug B, III	0	0	3	9	18	23









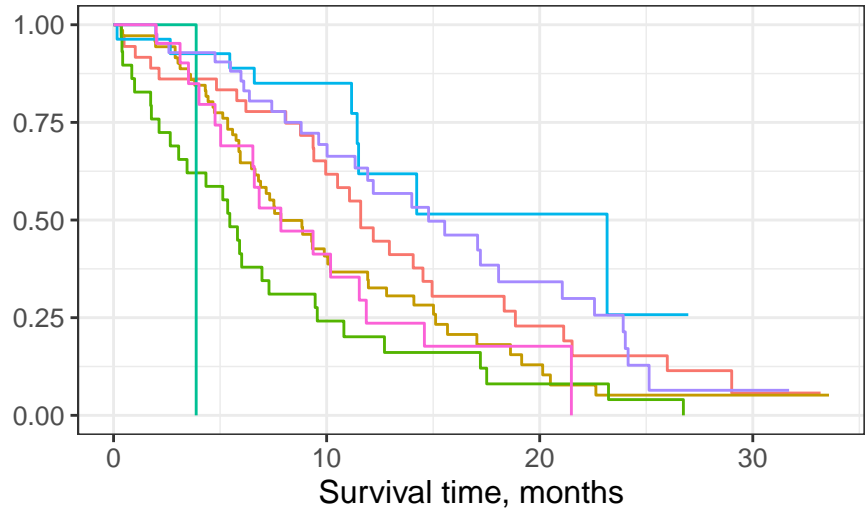
Male

At Risk (Cum. Events)	138 (0)	44 (76)	13 (103)	2 (112)
Survival (95% CI)	% (100, 100)	42% (34, 52)	15% (9, 23)	4% (1, 12)

Female

At Risk (Cum. Events)	90 (0)	43 (27)	11 (45)	1 (53)
Survival (95% CI)	% (100, 100)	67% (58, 78)	34% (24, 49)	8% (3, 27)

Survival Probability



Male, Asymptomatic      Male, In bed <50% of the day      Female, Asymptomatic  
Male, Symptomatic and ambulatory      Male, In bed > 50% of the day      Female, Symptomatic and ambulatory

At Risk (Cum. Events)

Male, Asymptomatic	36 (0)	18 (13)	6 (24)	1 (28)
Male, Symptomatic and ambulatory	71 (0)	20 (39)	5 (51)	1 (54)
Male, In bed <50% of the day	29 (0)	6 (22)	2 (26)	0 (28)
Male, In bed > 50% of the day	1 (0)	0 (1)	0 (1)	0 (1)
Female, Asymptomatic	27 (0)	13 (4)	2 (8)	0 (9)
Female, Symptomatic and ambulatory	42 (0)	23 (12)	8 (22)	1 (28)
Female, In bed <50% of the day	21 (0)	7 (11)	1 (15)	0 (16)

Survival (95% CI)

Male, Asymptomatic	100% (100, 100)	62% (47, 81)	23% (12, 45)	6% (1, 32)
Male, Symptomatic and ambulatory	100% (100, 100)	41% (30, 55)	13% (6, 28)	5% (1, 19)
Male, In bed <50% of the day	100% (100, 100)	24% (13, 46)	8% (2, 30)	NA% (NA, NA)
Male, In bed > 50% of the day	100% (100, 100)	NA% (NA, NA)	NA% (NA, NA)	NA% (NA, NA)
Female, Asymptomatic	100% (100, 100)	85% (73, 100)	52% (30, 88)	NA% (NA, NA)
Female, Symptomatic and ambulatory	100% (100, 100)	69% (56, 86)	34% (21, 57)	6% (1, 36)
Female, In bed <50% of the day	100% (100, 100)	41% (24, 71)	18% (6, 49)	NA% (NA, NA)

Survival Probability

1.00

0.75

0.50

0.25

0

10

20

30

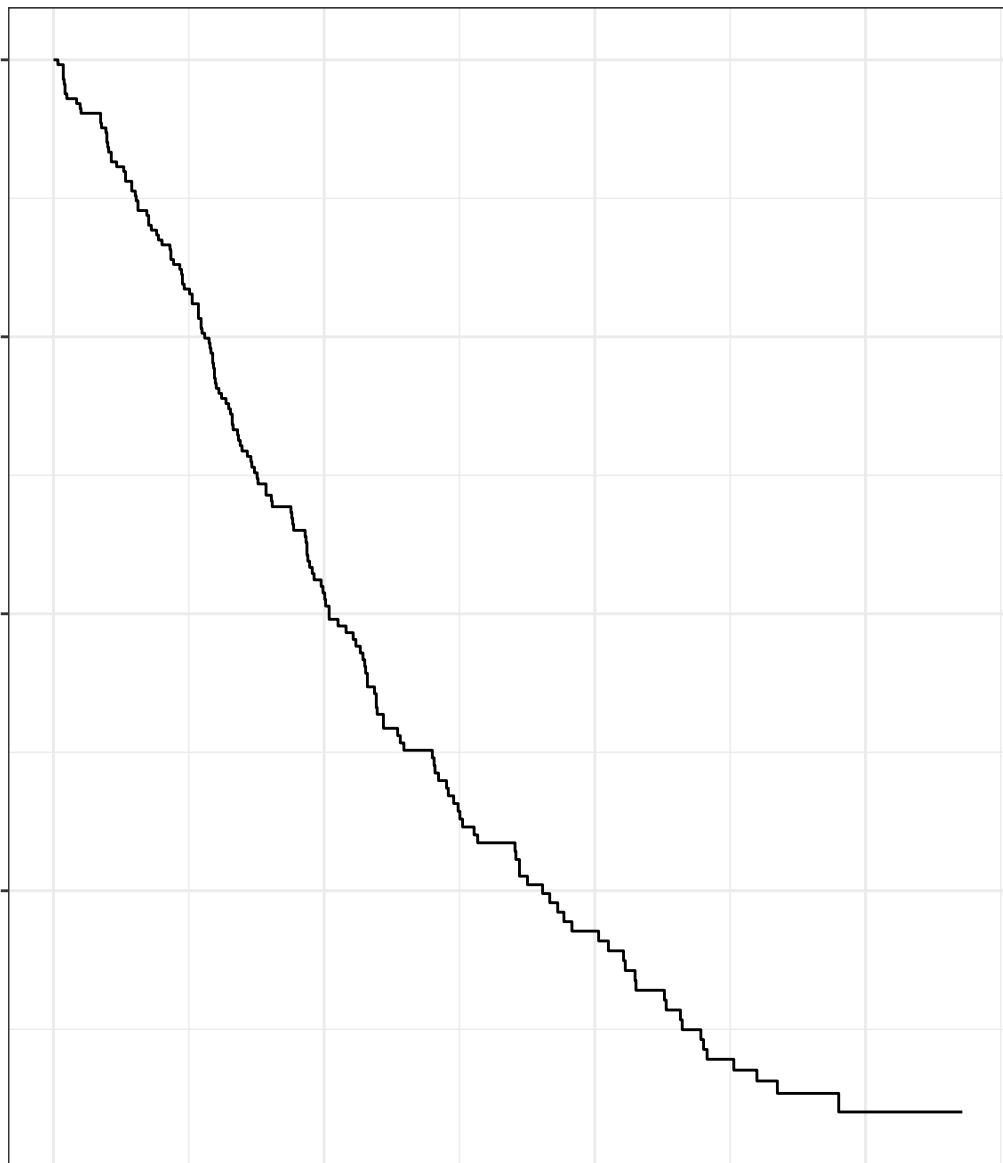
Survival time, months

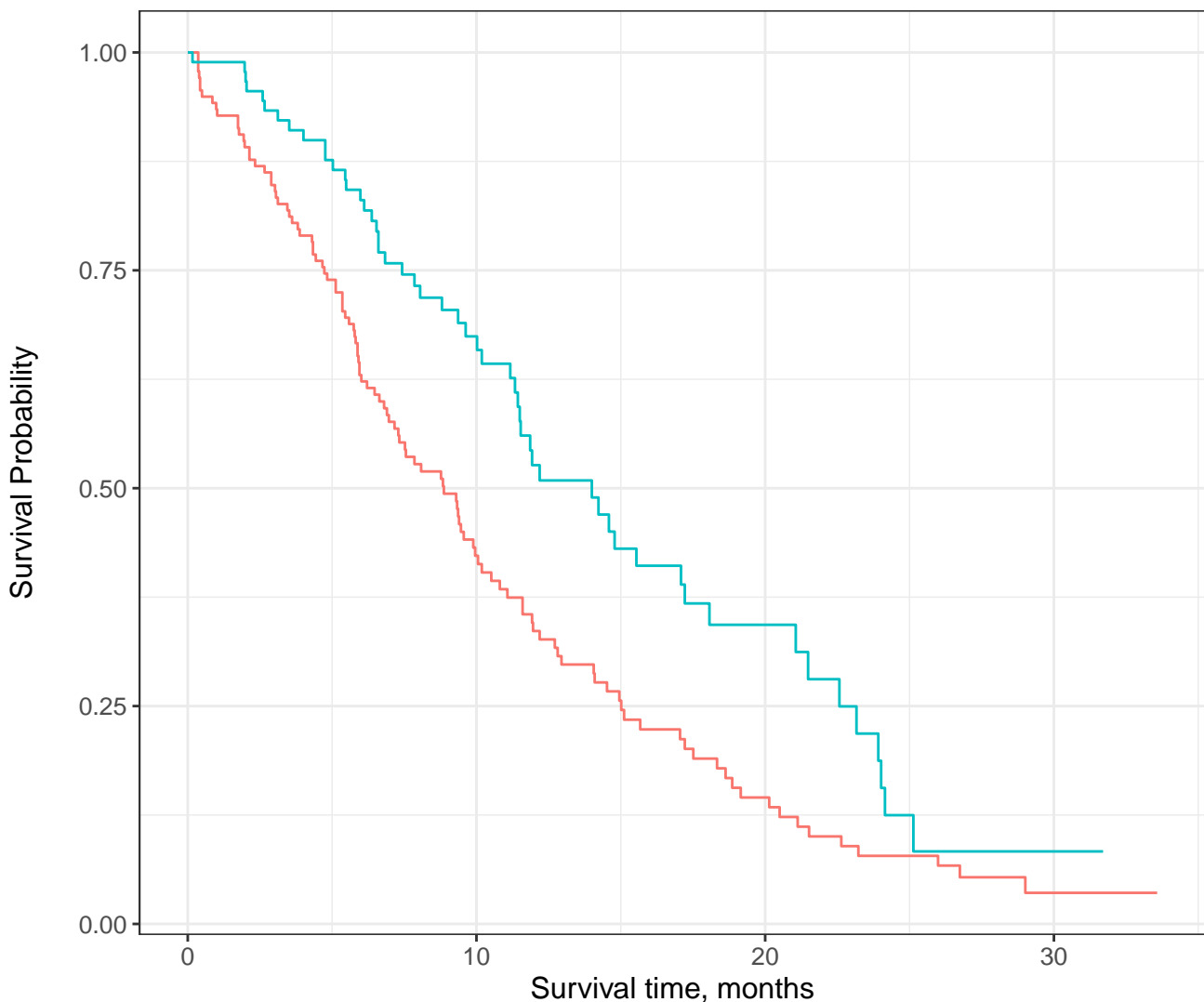
No. at Risk (Events) 228 (0)

87 (103)

24 (148)

3 (165)

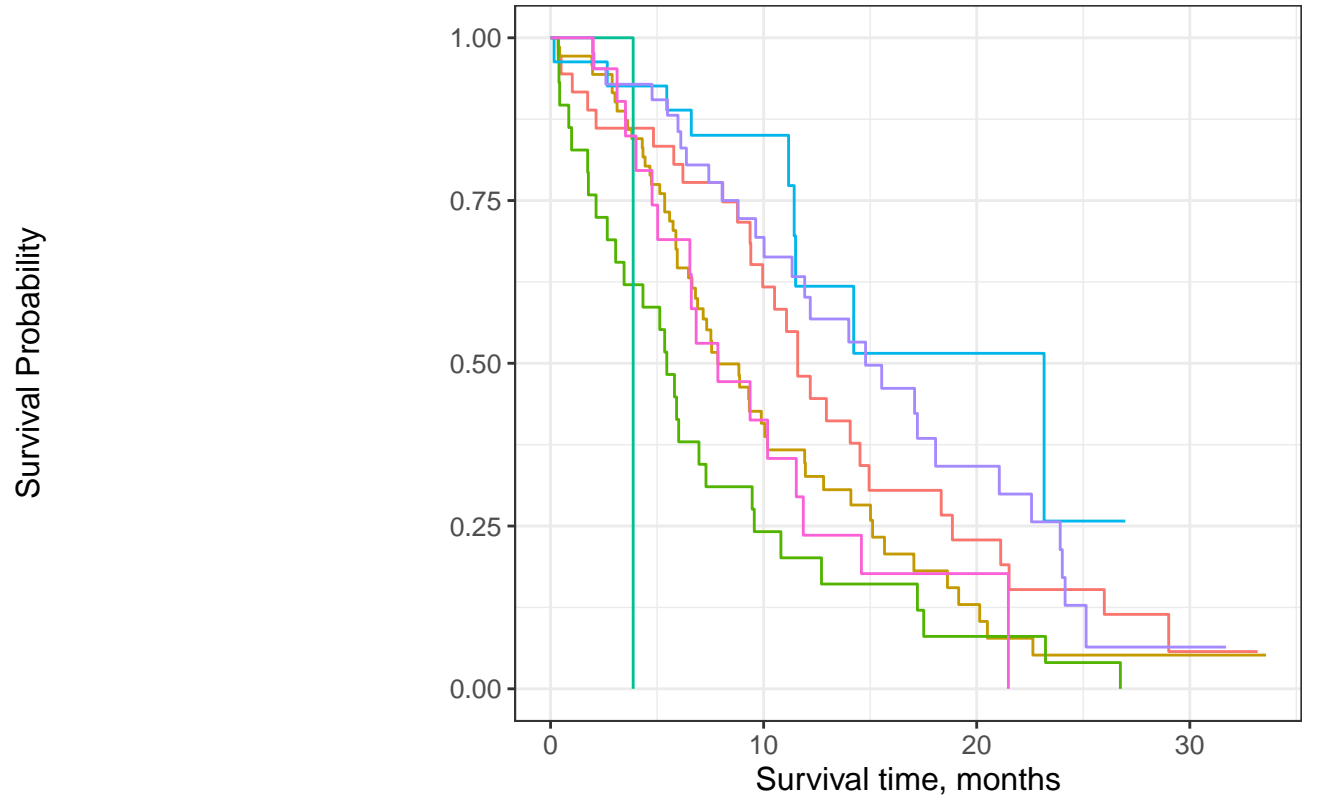




— Male — Female

No. at Risk (Events)

Male	138 (0)	44 (76)	13 (103)	2 (112)
Female	90 (0)	43 (27)	11 (45)	1 (53)

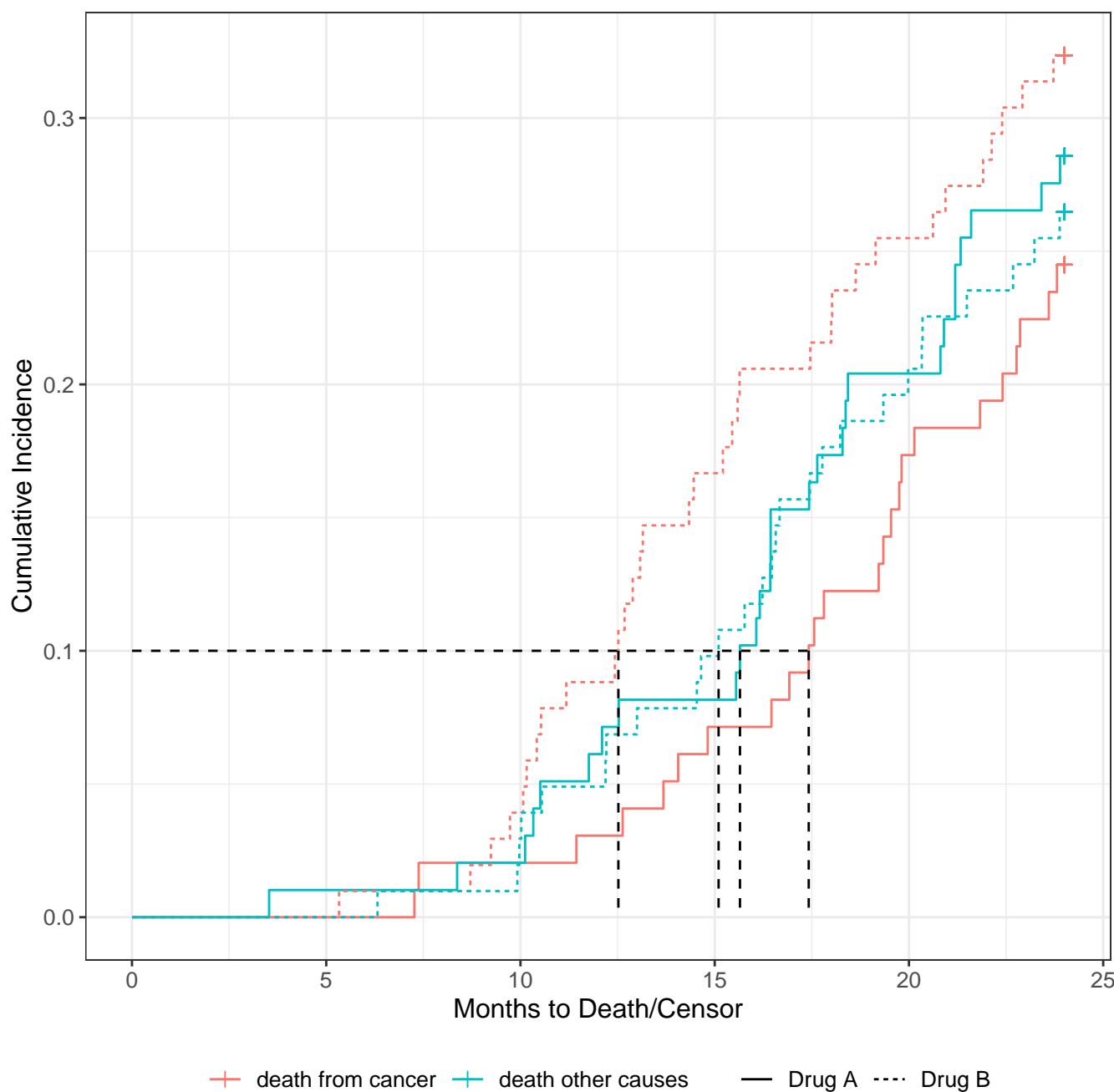


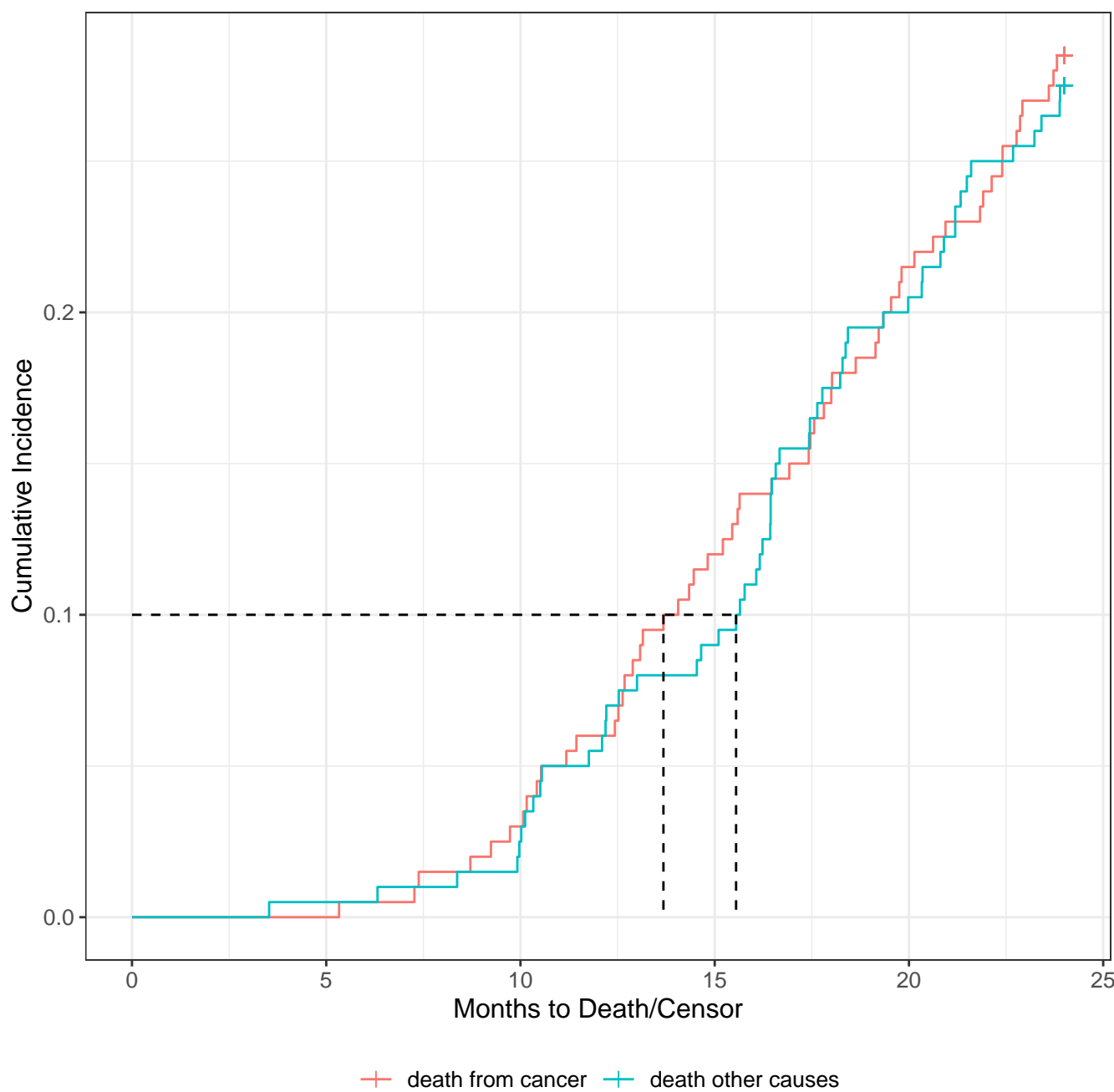
Male, Asymptomatic      Male, In bed <50% of the day      Female, Asymptomatic

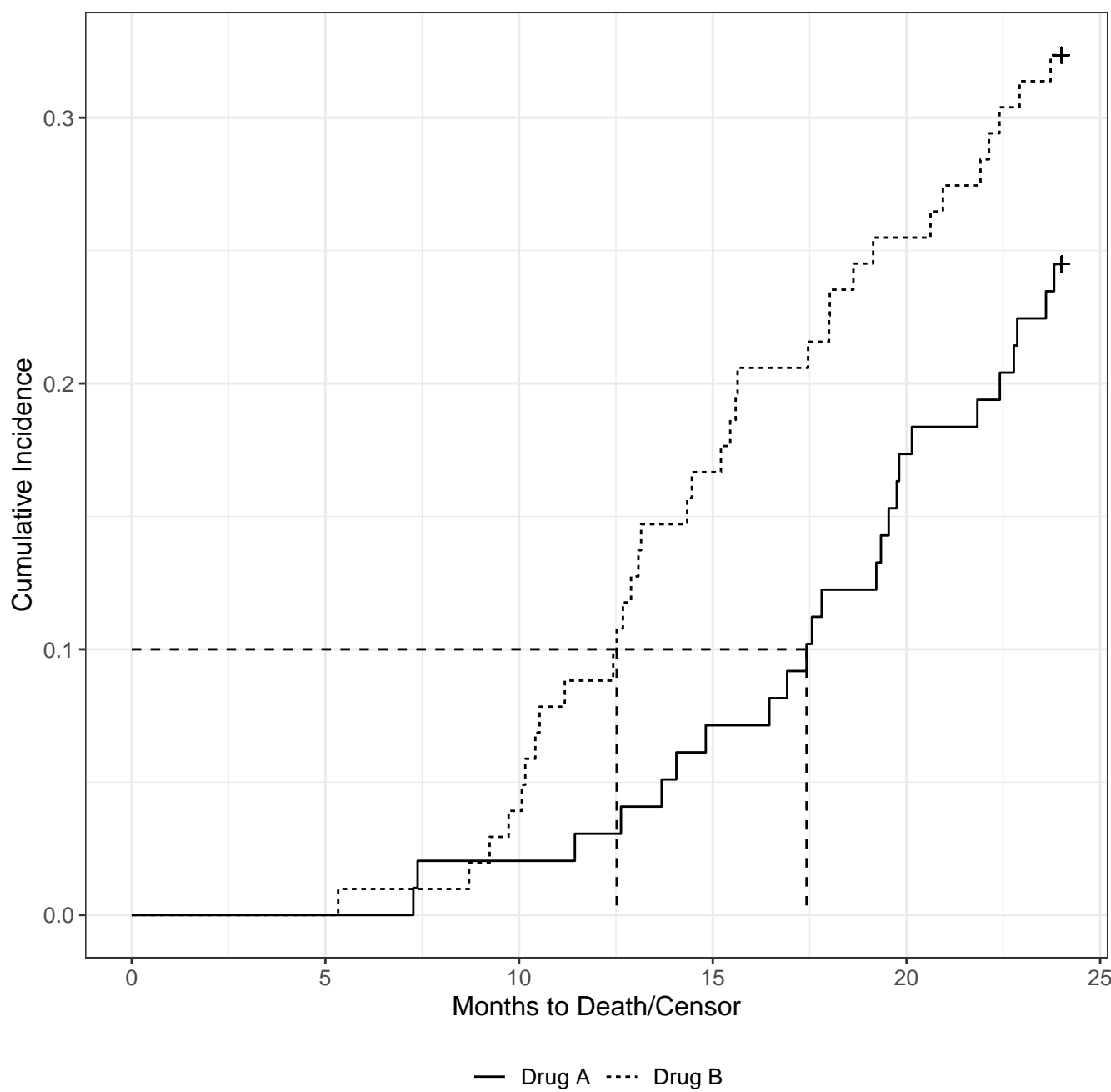
Male, Symptomatic and ambulatory      Male, In bed > 50% of the day      Female, Symptomatic and ambulatory

No. at Risk (Events)

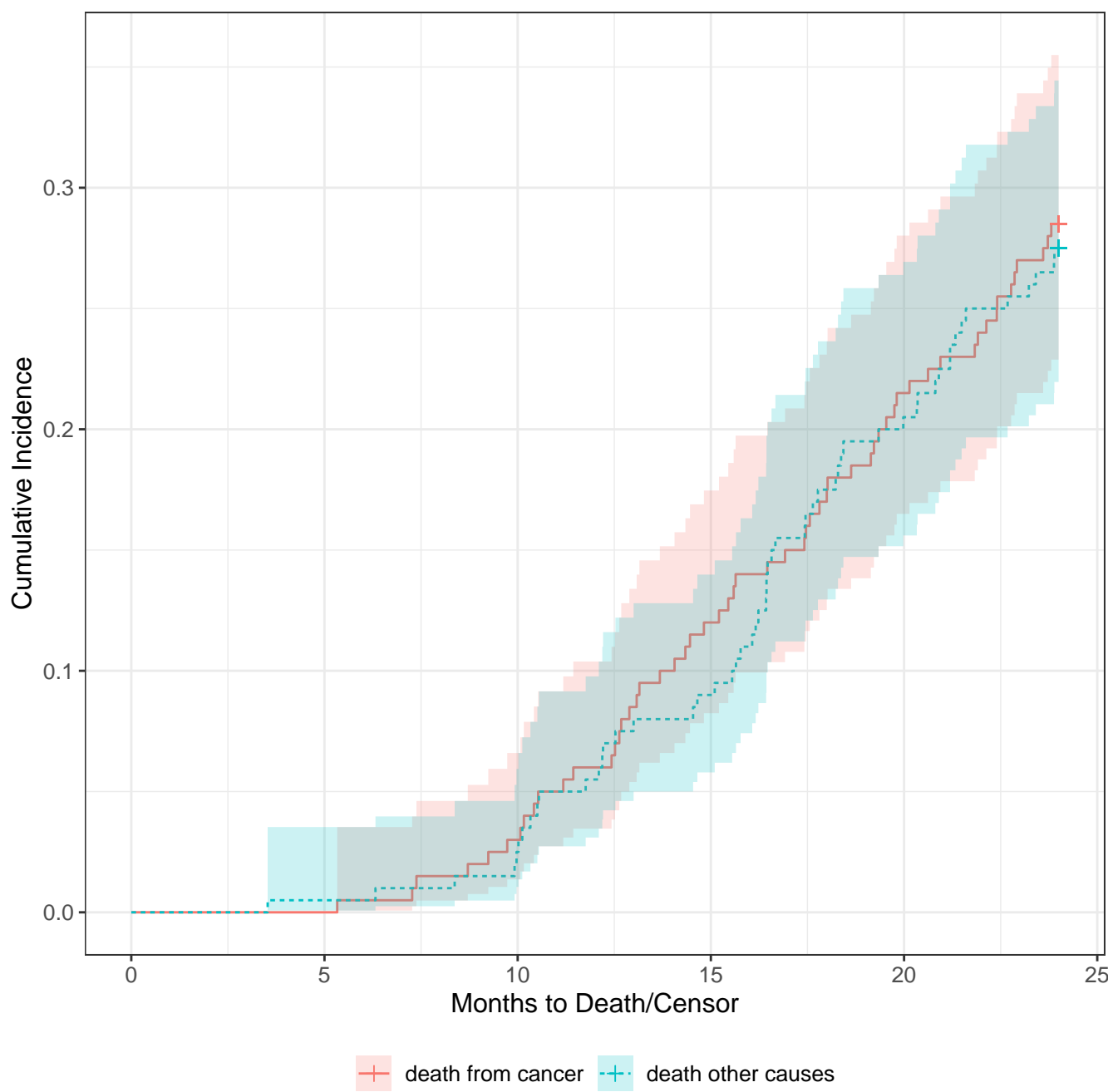
Male, Asymptomatic	36 (0)	18 (13)	6 (24)	1 (28)
Male, Symptomatic and ambulatory	71 (0)	20 (39)	5 (51)	1 (54)
Male, In bed <50% of the day	29 (0)	6 (22)	2 (26)	0 (28)
Male, In bed > 50% of the day	1 (0)	0 (1)	0 (1)	0 (1)
Female, Asymptomatic	27 (0)	13 (4)	2 (8)	0 (9)
Female, Symptomatic and ambulatory	42 (0)	23 (12)	8 (22)	1 (28)
Female, In bed <50% of the day	21 (0)	7 (11)	1 (15)	0 (16)

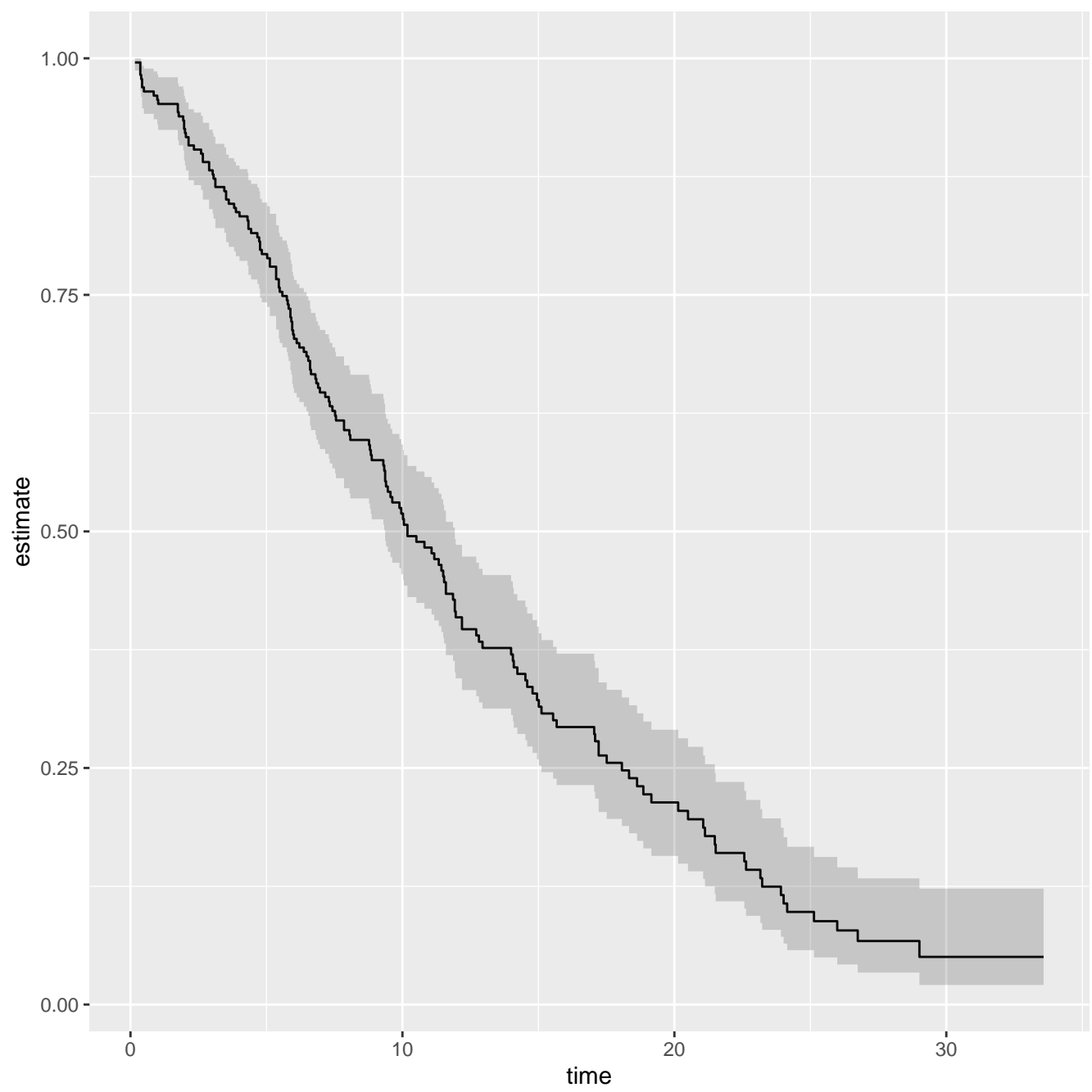


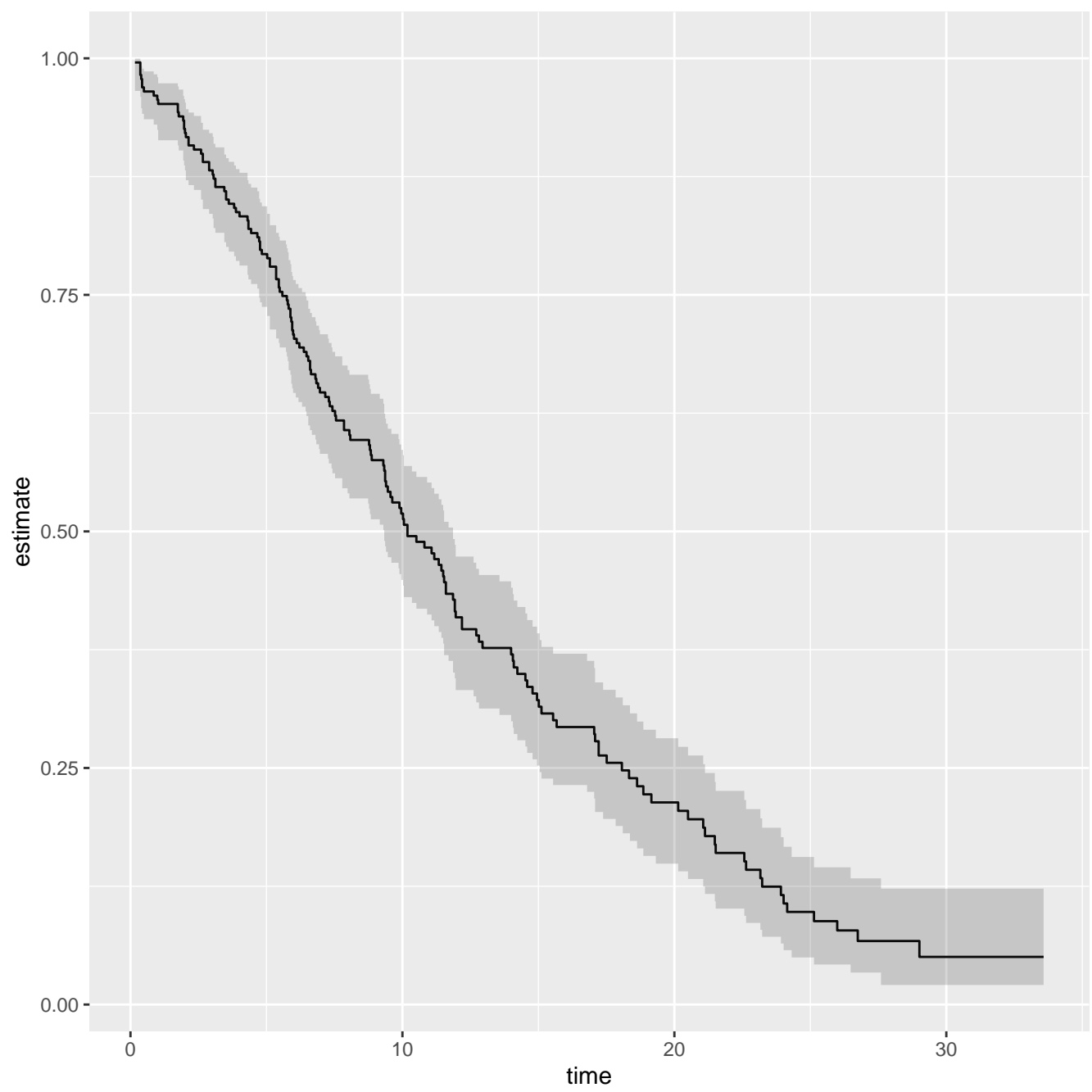


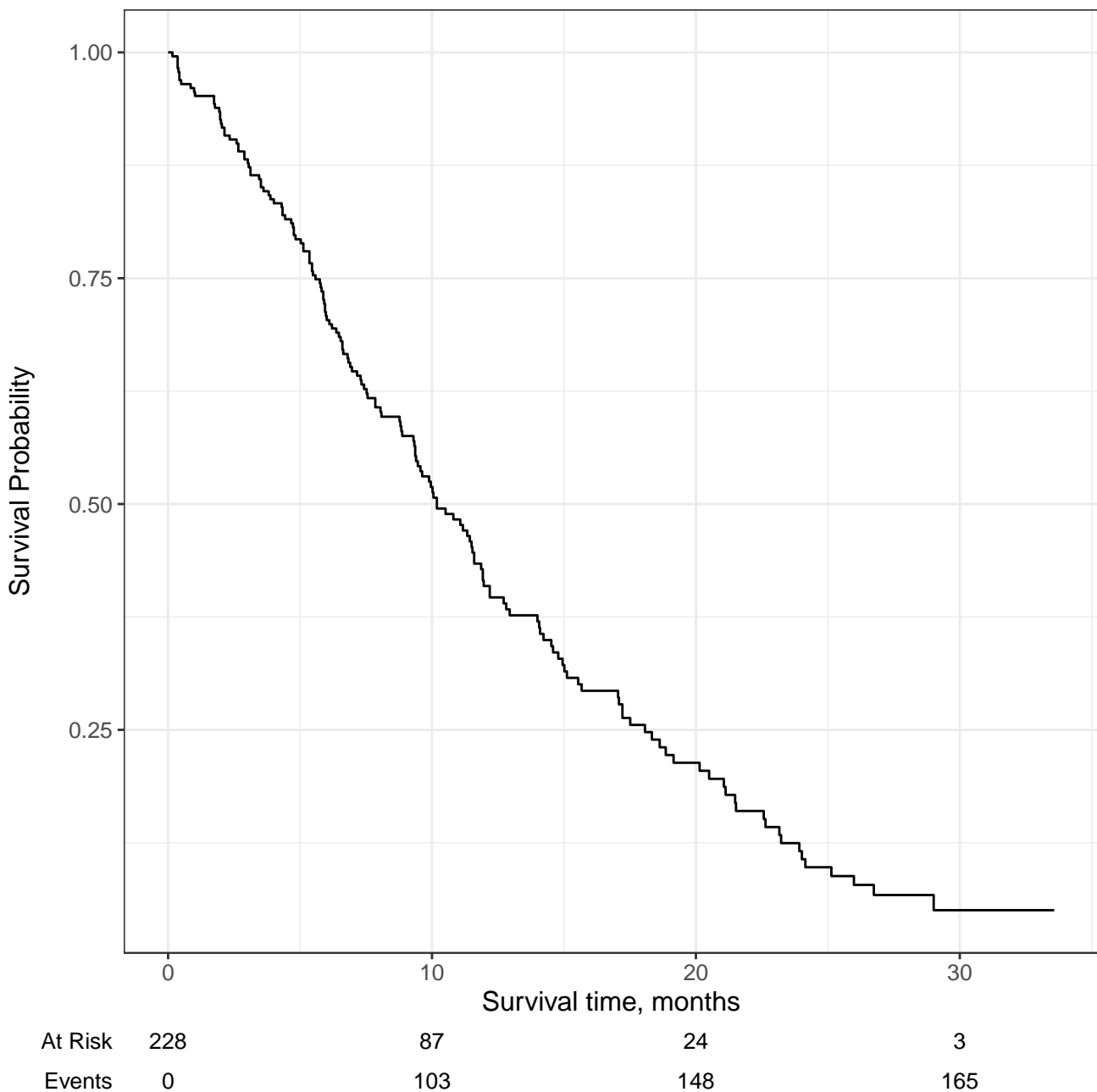


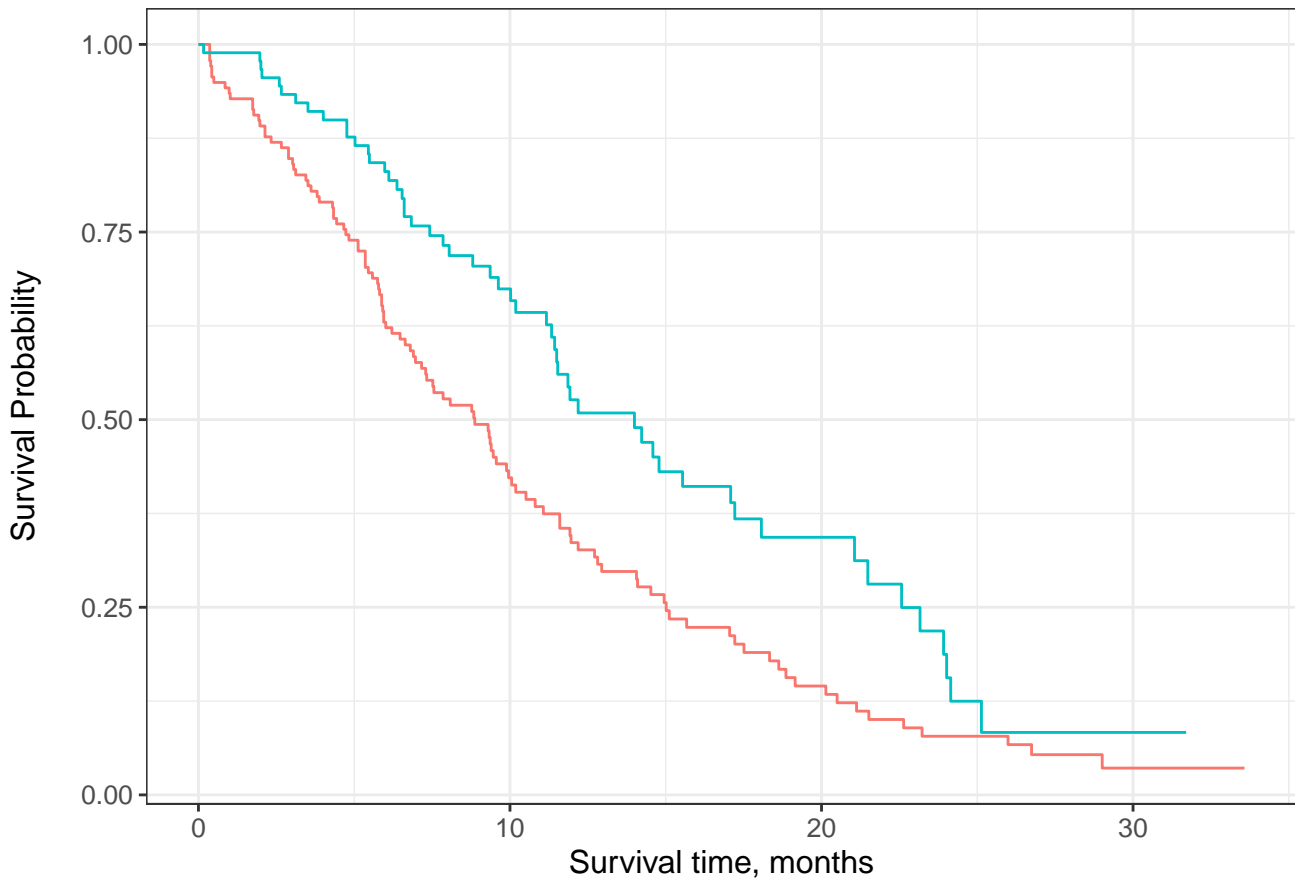












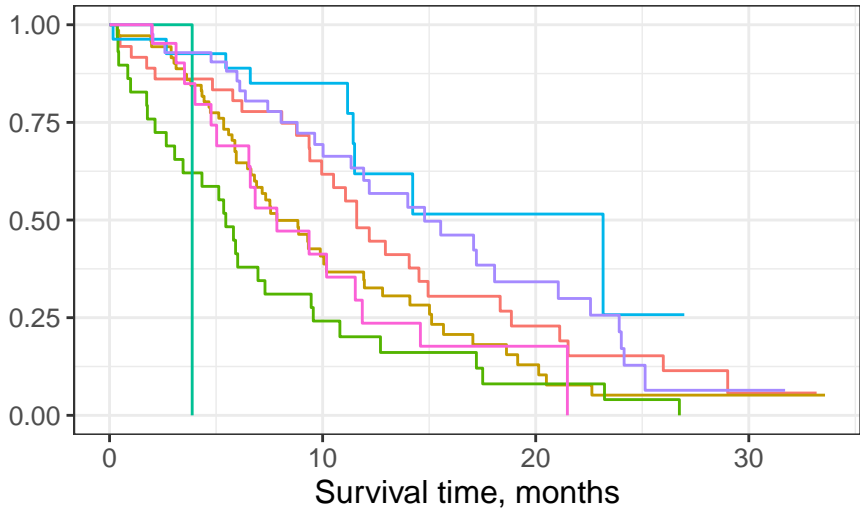
### Male

At Risk	138	44	13	2
Events	0	76	103	112

### Female

At Risk	90	43	11	1
Events	0	27	45	53

Survival Probability



Male, Asymptomatic

Male, In bed <50% of the day

Female, Asymptomatic

Male, Symptomatic and ambulatory

Male, In bed > 50% of the day

Female, Symptomatic and ambulatory

At Risk

Male, Asymptomatic

36

18

6

1

Male, Symptomatic and ambulatory

71

20

5

1

Male, In bed <50% of the day

29

6

2

0

Male, In bed > 50% of the day

1

0

0

0

Female, Asymptomatic

27

13

2

0

Female, Symptomatic and ambulatory

42

23

8

1

Female, In bed <50% of the day

21

7

1

0

Events

Male, Asymptomatic

0

13

24

28

Male, Symptomatic and ambulatory

0

39

51

54

Male, In bed <50% of the day

0

22

26

28

Male, In bed > 50% of the day

0

1

1

1

Female, Asymptomatic

0

4

8

9

Female, Symptomatic and ambulatory

0

12

22

28

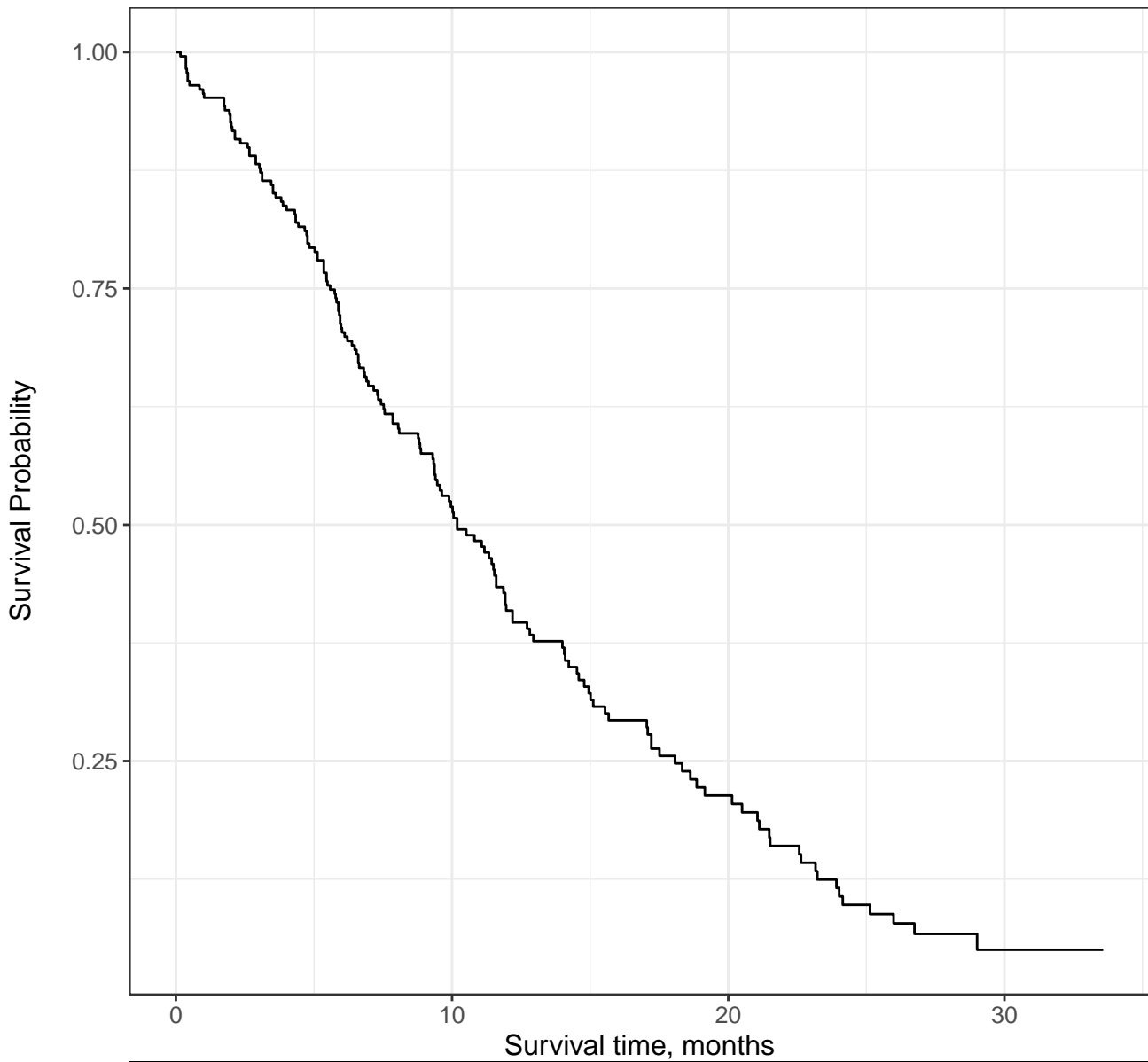
Female, In bed <50% of the day

0

11

15

16



At Risk

228

87

24

3

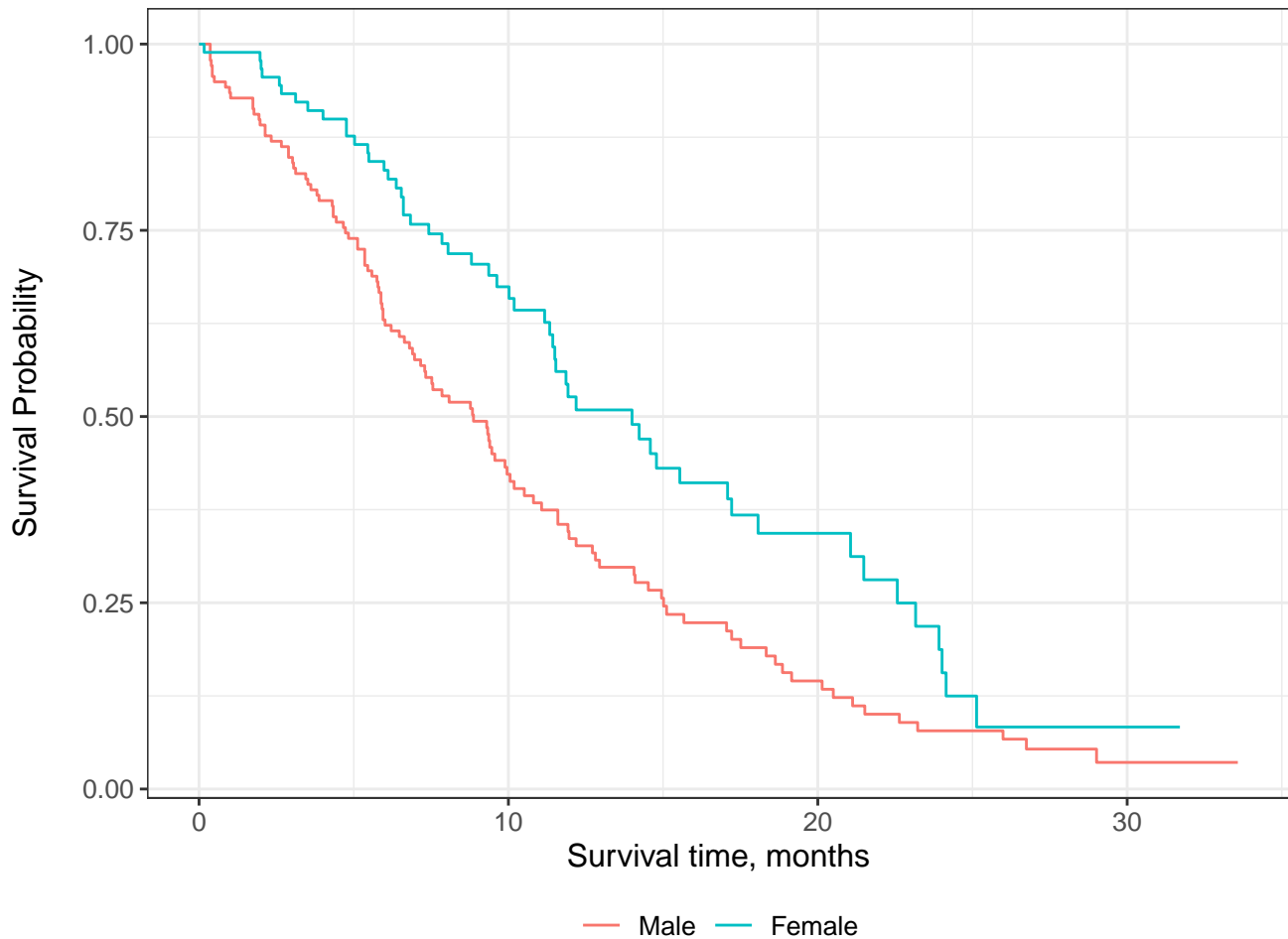
Events

0

103

148

165



#### Male

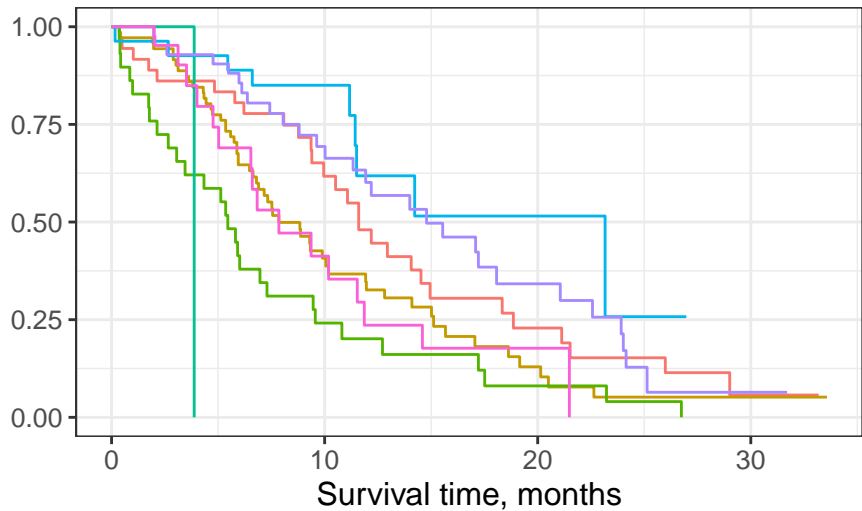
At Risk	138	44	13	2
Events	0	76	103	112

#### Female

At Risk	90	43	11	1
Events	0	27	45	53



Survival Probability



Male, Asymptomatic

Male, In bed <50% of the day

Female, Asymptomatic

Male, Symptomatic and ambulatory

Male, In bed > 50% of the day

Female, Symptomatic and ambulatory

At Risk

Male, Asymptomatic	36	18	6	1
Male, Symptomatic and ambulatory	71	20	5	1
Male, In bed <50% of the day	29	6	2	0
Male, In bed > 50% of the day	1	0	0	0
Female, Asymptomatic	27	13	2	0
Female, Symptomatic and ambulatory	42	23	8	1
Female, In bed <50% of the day	21	7	1	0

Events

Male, Asymptomatic	0	13	24	28
Male, Symptomatic and ambulatory	0	39	51	54
Male, In bed <50% of the day	0	22	26	28
Male, In bed > 50% of the day	0	1	1	1
Female, Asymptomatic	0	4	8	9
Female, Symptomatic and ambulatory	0	12	22	28
Female, In bed <50% of the day	0	11	15	16